

SEGA™

™

**SOUL
SERIES**

EARTHWORM JAM™



INSTRUCTION MANUAL

LICENSED BY SEGA ENTERPRISES, LTD. FOR
PLAY ON THE SEGA™ GENESIS™ SYSTEM.



Model No. 3350

OFFICIAL
SEGA

SEAL OF
QUALITY

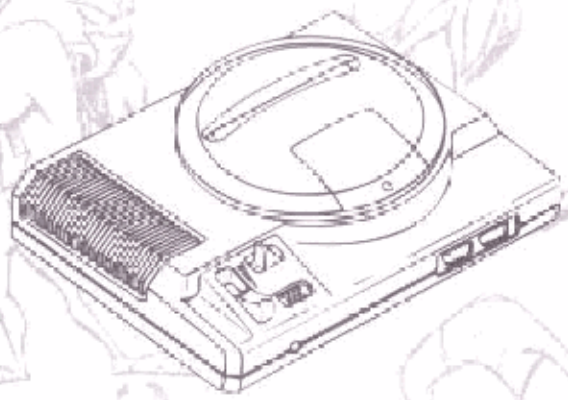


EARTH WORM
JIM
© SEGA ENTERTAINMENT
1993 12-8

The Sega Genesis Cartridge is intended for use exclusively with the Sega™ Genesis™ System.

- Do not bend it, crush it, or submerge it in liquids.
- Do not leave it in direct sunlight or near a radiator or other source of heat.
- Be sure to take an occasional recess during extended play, to rest yourself and the Sega Cartridge.

WARNING: READ BEFORE USING YOUR SEGA VIDEO GAME SYSTEM.
 A very small percentage of individuals may experience epileptic seizures when exposed to certain light patterns or flashing lights. Exposure to certain patterns or backgrounds on a television screen or while playing video games may induce an epileptic seizure in these individuals. Certain conditions may induce previously undetected epileptic symptoms even in persons who have no history of prior seizures or epilepsy. If you, or anyone in your family has an epileptic condition, consult your physician prior to playing. If you experience any of the following symptoms while playing a video game—dizziness, altered vision, eye or muscle twitches, loss of awareness, disorientation, any involuntary movement or convulsions—IMMEDIATELY discontinue use and consult your physician before resuming play.



Warning to owners of projection televisions: Still pictures or images may cause permanent picture-tube damage or mark the phosphor of the CRT. Avoid repeated or extended use of video games on large-screen projection televisions.



Interactive Entertainment

Playmates Interactive Entertainment
14200 S. Injara Way
La Brea, CA 90538



This official seal is your assurance that this product meets the highest quality standards of SEGA™. Buy games and accessories with this seal to be sure that they are compatible with the SEGA GENESIS™ SYSTEM.

KEEP FACE FLEXIBLE & BE PREPARED TO BREAK ALL RECORDS!
AtariGuide



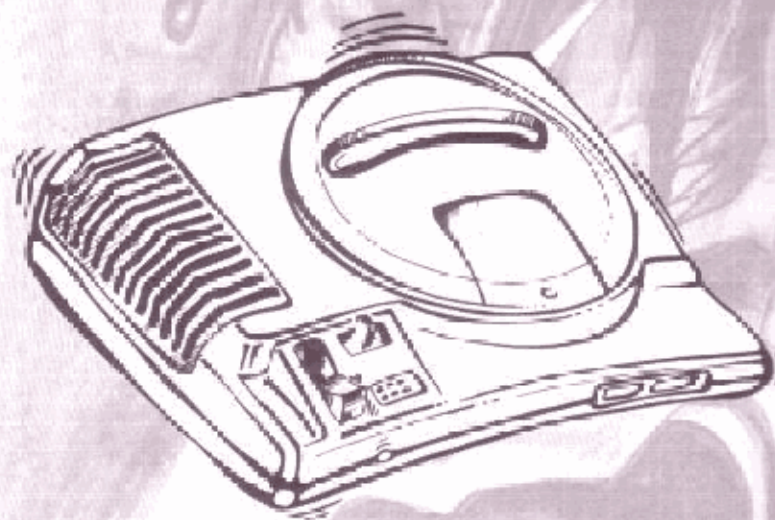
EARTHWORM JIM™

DIGGING IN	3
TAKE CONTROL	4
THE WORM HAS TURNED ...	5-12
THE OPTIONS SCREEN	13-14
THE GAME SCREEN	15-16
ITEMS	17-18
THE LEVELS	19-24
THE CAST OF CHARACTERS	25-30
HINTS AND TIPS	31-32
CREDITS	33-38
NOTES	39
WARRANTY	40



DIGGING IN

1. Make sure your **Genesis** system is set up correctly.
2. Be sure that Control Pad 1 is plugged in properly.
3. Make sure the power switch is turned OFF. Place the Earthworm Jim cartridge into the cartridge slot and press it down firmly.
4. Turn the power switch to ON. You should see the Sega title screen, then the Earthworm Jim title screen. If not, open your eyes and try again.



TAKE CONTROL

Button A

Fire your Plasma Blaster, or any other weapon you get. Also acts as an accelerator for your rocket.

Button B

Does the Head Whip, the "Hamster Bite" (you'll find out...), and the Bungee Shove. Activates shields during the rocket flights.

Button C

Makes Jim jump, or when in flight, turns Jim's head into a rapidly rotating helicopter blade.

Directional Pad (D-Button)

Controls which way you move and which direction you look. What did you think it did?



THE WORM HAS TURNED

INTO A SUPER HERO

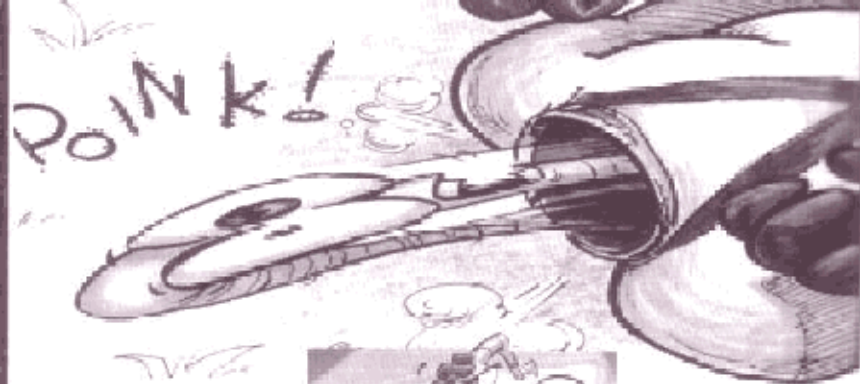
It's a day like any other. A crow is chasing a worm, a worm named Jim. Today the worm escapes to safety and the crow eats dirt.



Meanwhile, in outer space...



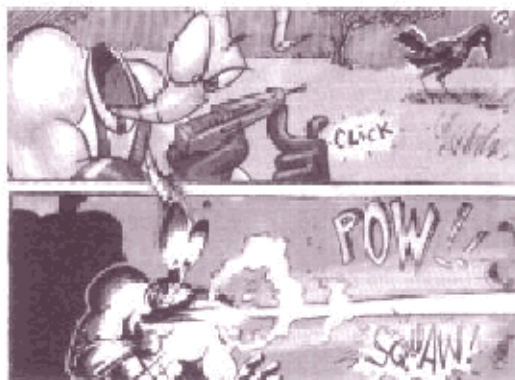
AtariGuide.com



Jim soon realizes he is in control of the suit, and we witness the birth of Earthworm Jim.

Jim checks out the suit and he notices a red thingie attached to his side, which just happens to be a plasma blaster. He pulls it out of the holster and starts playing with the buttons. Meanwhile, off in the distance, the crow is still looking for his lunch. Jim finds the trigger and lets loose with a plasma blast.

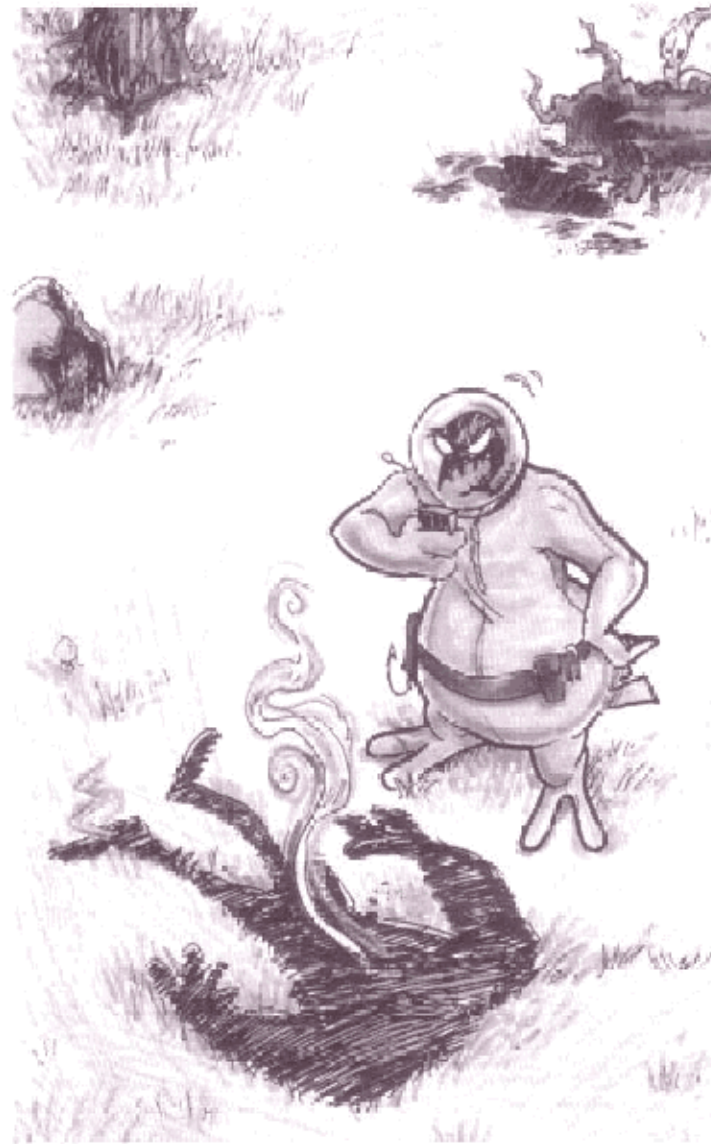
BLAMO! The crow is torched!



Taking a moment to gather his thoughts, Jim leans up against a tree. Due to the suit's incredible power, Jim forces the tree over, right on top of the now barely conscious crow. His lifetime nemesis is never to be seen again.



Our hero thinks he's got it pretty easy now, but...



he hears something in the distance. Psy-Crow, the intergalactic bounty hunter is standing over a burn in the grass which the suit had left behind. Peering over the toppled tree, Jim sees Psy-Crow talking to the Queen, informing her that the suit is very near. The Queen knows that the suit will make her even more beautiful than her imprisoned twin sister, "Princess-What's-Her-Name." Jim decides he needs to meet this Princess and dashes off to find her before Psy Crow can find him and **the suit**.



THE OPTIONS SCREEN

To enter the options screen from the title screen, use up and down on the D pad to highlight the options title and press any button.

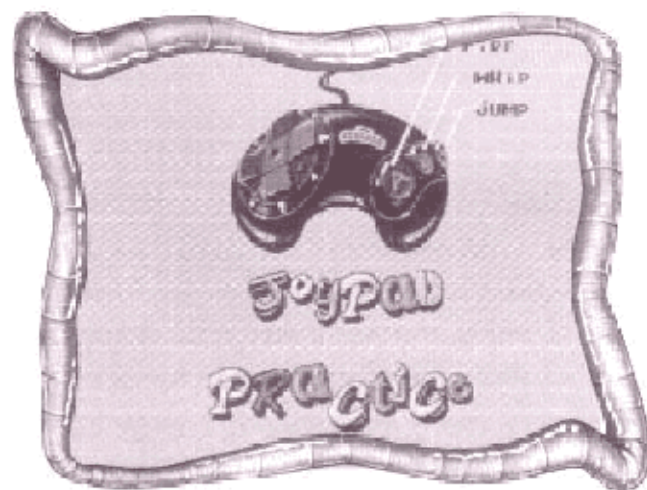
Joy pad: You can change the controls of the button layout by highlighting the Joy Pad option and pressing Button A.

Difficulty: There are three levels of difficulty in Earthworm Jim: Practice, Normal and Difficult. Every level of difficulty changes a number of things.

Practice: You can't even watch fishing shows. Salt makes you cringe. You don't even own any Earthworm Jim action figures. You still haven't figured out the hamster gags.

Normal: Okay, you've ordered the action figures. You juggle fishing lures. You call him EWJ even though it's more syllables than Earthworm Jim. You've been caught in long underwear tying your hair to a curtain rod to see if you can swing from your head, just like EWJ. You begin to make hamster jokes yourself...

Difficult: You go swimming in trout-infested waters. You sunbathe at the beach on the hottest day of the year, and swim in the Dead Sea. You've designed the next Earthworm Jim game and submitted your idea to Shiny Entertainment. You're a stud, you're tough, you're a *Lumbricus terrestris*.

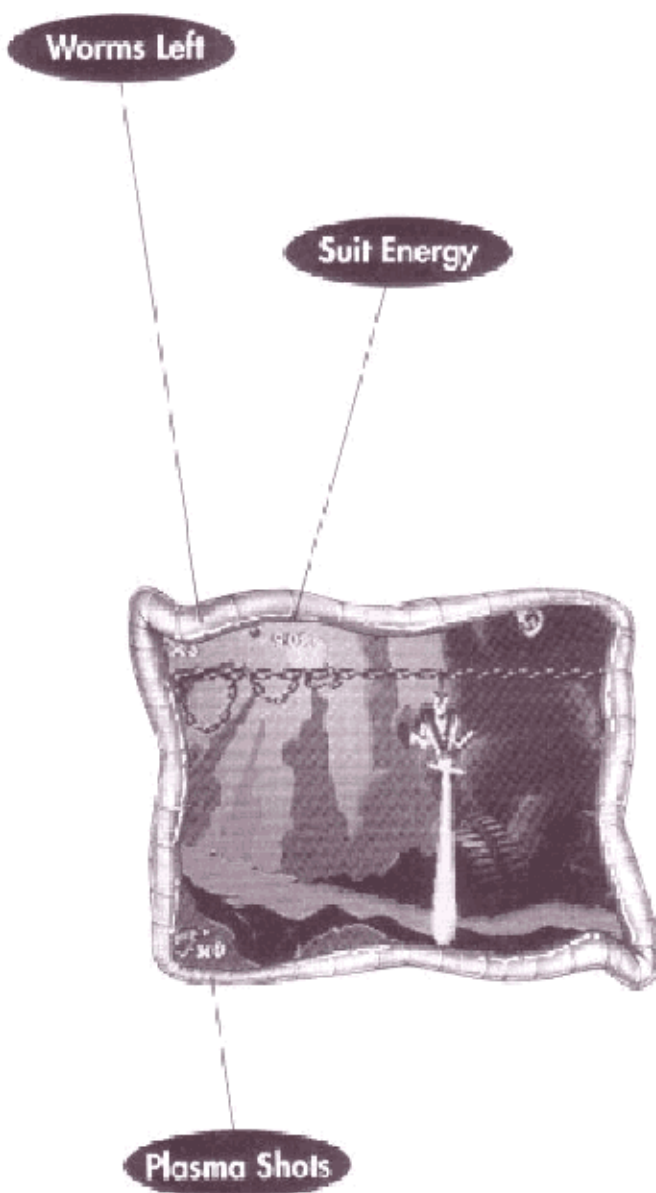


THE GAME SCREEN

Worms Left: This is the number of additional Jim lives you have left to complete the game. There are many hidden free lives to help you on your quest to save the Princess. Look everywhere for them!

Suit Energy: This is the percentage of energy the suit has left. Whenever you are attacked by an enemy, touched by an enemy or generally do something stupid this number goes down. If this number reaches zero you will lose one life. Additional energy can be found floating throughout the levels, or when you defeat an enemy.

Plasma Shots: This is number of rounds of plasma energy you have left to fire. Additional energy clips can be picked up while you are playing, but you must use your shots carefully as many enemies await you. If you run completely out of shots, the plasma gun automatically recharges itself very slowly by gathering energy from around it, but it is strongly advised not to let the gun run out of ammo.



ITEMS



Plasma Power: Each time you pick up one of these you get an additional 250 rounds of plasma power. Plasma shots are limited so get as many of these as you can find!



Mega Plasma: The Big Wally of plasma detonation! This weapon will generally wipe out anything you can point it at and fire! Every time you collect one of these you only get one mega-shot, so use them wisely!



Suit Power: Atomic energy that the suit needs to function. Collecting these items increases your overall suit energy. More healthy than a big bowl of chicken soup.



Super Suit Power:

We're talking full suit power. Like a double espresso and a hunk of cheesecake, prepare to be energized to the extreme!



Asteroid Shields: During the Rock Races, grab these to protect yourself from colliding with the asteroids.



Atomic Accelerator: Catch one of these power gems to throw yourself into overdrive. Useful for a quick burst of speed to avoid Psy-Crow.



Fuel Pods: While racing, grab these items for fun and profit.



Extra Life: Hidden throughout the vast levels are these items that will give you an extra rescuing the princess.

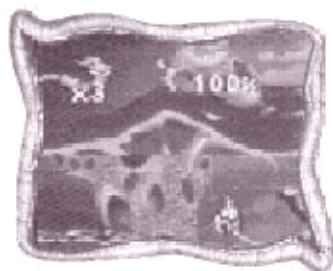


THE LEVELS:



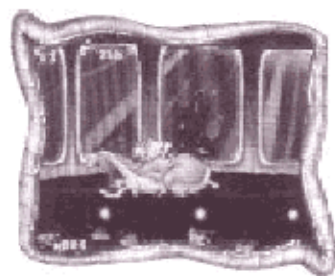
New Junk City:

Menacing crows, giant mutant garbage cans, the junkyard's owner Chuck and his dog Fifi, want to welcome you to the junkyard in their own special way - by trying to kill you. Bounce from tire to tire, or slide across zip lines to grab extra power-ups. Watch out, compared to Fifi's bark, those bites are even worse!



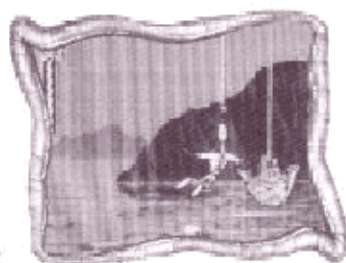
What the Heck?:

Welcome to Planet Heck. As Evil the Cat dances, you wander through the devilishly tricky maze. Step quickly...it can get a little too hot for Jim even in his indestructible suit. For an uplifting experience, take a jog on a gem, but don't let Jim get a hot foot! There'll be a hot time in the old town tonight for sure!!



Down the Tubes:

Bob the goldfish knows that EWJ's super suit could make him ruler of the world. Maybe even the universe!!! Controlling the drone cat minions in his underwater lair, Bob will use his servants to find you wherever you hide, high or low. Don't let the size of Bob's kitten guards fool you- they're just as powerful as the cats! Hamsters galore!



Snot a Problem:

Bungee jumping is scary enough without Major Mucus trying to bash you into the walls, but that's exactly his plan. As your bungee cord gets thinner and thinner, your life hangs on a few measly threads!!! But that's not all. Mucus Phlegm Brain is waiting for you to get too close to the pool of snot or fall in - he's waiting for lunch!

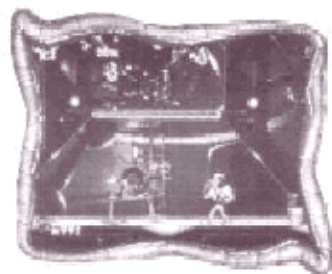


10



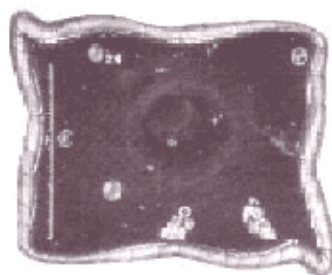
20

THE LEVELS: CONTINUED



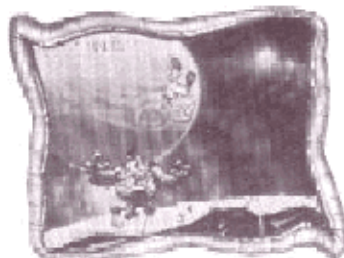
Level 5

The Professor would love to have Earthworm Jim on the dissection table, but that darn super suit keeps him safe. The Professor wants that suit back - after all, he designed it for the Queen. Of course, he could make another one... if only that darn monkey hadn't eaten the blueprints. That's another can of worms entirely. You'd better keep an eye out for the professor's creepy science experiments, they're everywhere. Careful when the lights go out! Remember when you were afraid of the dark? Relive the horror (if you can find it) and find your way out!



Andy Asteroids:

Ready for a wild ride through space? Well hold on to your seat because between each level Psy-Crow is right on your tail! Dodge the asteroids and try knocking Psy-Crow off his rocket backpack to help you get to the finish line alive. Grab the Atomic Accelerators along the way to leave Psy-Crow eating your heavy ions. Of course if you're traveling that fast, you'll want to stock up on shields...unless you're an expert pilot.



For Pete's Sake:

Walking the dog was never like this!!! If you let little Peter fall, watch out - his temper gets the best of him and he mutates into a ravenous hulking giant! If the meteor showers don't rain on your parade, and the flying saucers don't blow you away, then maybe, just maybe you'll make it through okay. Oh, did I forget to mention that the Unipus' (like an octopus but with one arm) tentacles can kill you...?



THE LEVELS: CONTINUED



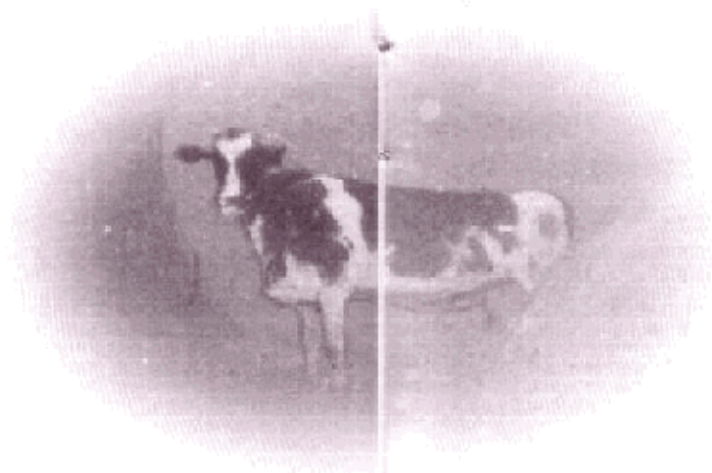
Intestinal Distress:

Disgusting gross bad guys (like you were expecting less?). Flying fish spitting biting fish? And a boss that will put a major squeeze on you! Now, would you like to see what you just had for lunch?



Buttville:

It's dark, there's lightning in the distance, and you've got to keep your head in order to stay alive. You're now facing the Queen and her minions head to head, so use yours. The Queen is using her control over all the insects in order to stop you. Everywhere you turn, one of her followers is going to be there. You may think it's hopeless, but it's Snot. Try to control your every move here. Any mistakes will probably be your last.



23



24

THE CAST OF CHARACTERS:



Earthworm Jim:

Just an ordinary earthworm caught in a suit he doesn't understand. Faced with the daunting task of keeping the super powered suit out of the evil clutches of his vicious enemies, you'll have to use every weapon and power you can just to keep Jim alive! And has he got weapons, whips, plasma blasters, hamsters (umm. .) and other hi-tech stuff!



Chuck & Fifi:

Fifi is no lovable poodle. Try a psychotic, four-legged chainsaw with a rusty chain and you'll know what we mean. Fifi wants to keep strangers away from his master's junkyard. Chuck will throw up anything he can to keep you from surviving. You'll need to keep your wits in order to dethrone him.



Evil the Cat:

Born with no heart, the ruler of Heck lives to torture others. Filling Heck with corporate lawyers and dreaded elevator music, Evil has seen to it that Jim doesn't stand a snowball's chance. Evil's snowmen are a good example of how twisted this cat really is!!! If you thought Heck was bad before, you ain't seen nothin' yet.



Psy-Crow:

Jim was hunted by crows all his life, but never one with a gun!! Psy-Crow is determined to get that suit back for the Queen at any cost. Because of his persistence and twisted crow mind, you'll never know when he's gonna turn up!!! If he gets his worm hook into you and pulls you out of the suit, Jim is as good as bass bait. Keep your eyes open and stay on guard!



25



26

AtariGuide.com

CHARACTERS: CONTINUED



Major Mucus:

From the distant phlegm planet, Major Mucus will stop at nothing to get Jim's suit. Bouncing wildly from a tiny thread of goo, the Major is bound to be trouble. Watch out, if he gets a hold of Jim, the snat will *really* hit the fan!



Peter Puppy:

Peter may first look like a cute, cuddly puppy, but when he transforms into his alter ego there's nowhere to hide. This isn't going to be just another walk in the park with Peter! Jim's super suit helped him survive the trip through the black hole to Peter's world, but its powers might not be enough to help him get back...



Professor Monkey for a Head:

You'd be pretty mad too if you had a monkey sharing your head, or is the Professor sharing the monkey's head? Whatever you do, don't call him "Monkey Professor-for-a-Head" or he'll get really steamed! This guy is totally bananas and he's willing to destroy Jim to prove it.



Bob & #4:

Bob is a goldfish with plans...plans to steal Jim's powerful suit so he can rule the universe. He can't harm Earthworm Jim directly, but that's what the drone cat #4 is for!! This brute packs a mean punch! Whatever Bob wants, #4 gets – and Bob wants that suit!



CHARACTERS: CONTINUED



Doc Duodenum:

Tired of life as an alien's internal organ, Doc Duodenum took off on his own. The Doc would like to have Earthworm Jim over for lunch. Or was it over as lunch? Hmmm. Jim needs to escape soon, or he'll make his final exit as an entrée for Doc. Other than the deadly bile that oozes from his body, Doc is actually a tidy person (although not the sort you'd bring home to meet your parents...)



Princess-What's-Her-Name:

Twin sister of the queen, she got the good end of the genetic pool. A truly bodacious babe of the highest magnitude! When asked about her favorite activities, she sweetly replied "Save the space whales. I'm a Libra. Will you buy me a spaceship?"



The evil Queen Pulsating, Bloated, Festering, Sweaty, Pus-filled, Malformed, Slug for a Butt.....:

Adjectives escape us as we try to encapsulate the utter putridity of her being. Let's put it this way: she's big, she's bad, and she's in the mood for earthworm burgers!! She has a face not even a mother could love (and a body to match). She's Jim's ultimate nightmare! How can she be defeated? Is it possible? You know she has a twin sister, don't you?

HINTS AND TIPS:

Try not to stay in the same place too long. As a moving target, Jim is a lot tougher to hit.

Limit your firing to short bursts of plasma. This will help you save much needed rounds for later.

Use your head — literally! Your whip-like head can do more than destroy your enemies. You can use it to swing from place to place. Hmmm... what sort of thing could you swing from?

Don't be afraid to make a leap of faith. With a part-time propeller for a head, Jim can gently glide down a chasm that he's leapt into - even though you couldn't see where he was going to land.

Sometimes hanging around isn't such a hot idea and you'll need to get out of somebody's way. Just pull yourself up by your bootstraps (you'd be amazed at how many enemies don't look up...).

Surrounding yourself with Earthworm Jim action figures, watching the new television show and buying anything with Earthworm Jim, the Playmates logo, or Shiny Entertainment's logo on it will automatically make you the coolest person in your neighborhood.

Gather as many atoms as you can before the end of each stage. You'll need as much energy as you can get to defeat the bosses. And watch your plasma gun's energy level - recharging only seems to take longer when you're in a jam.

Open your eyes and search around. There are many secrets to be found. Closely look at what you see, for many secrets are *off the screen*...

There are a ton of goodies on each level. If you can't find a way to get to something you see, the answer may lie just ahead, or below, or above you, or this-away, or that-away...

To keep Psy-Crow out of the action, you've got to beat him in the asteroid...race. Otherwise he'll give you problems on every level. (Lose a turn for not laughing at the asteroid joke.)

Defeating the Queen involves stopping her from laying eggs. Now, how can you do that? Don't you wish you stayed awake during health education?

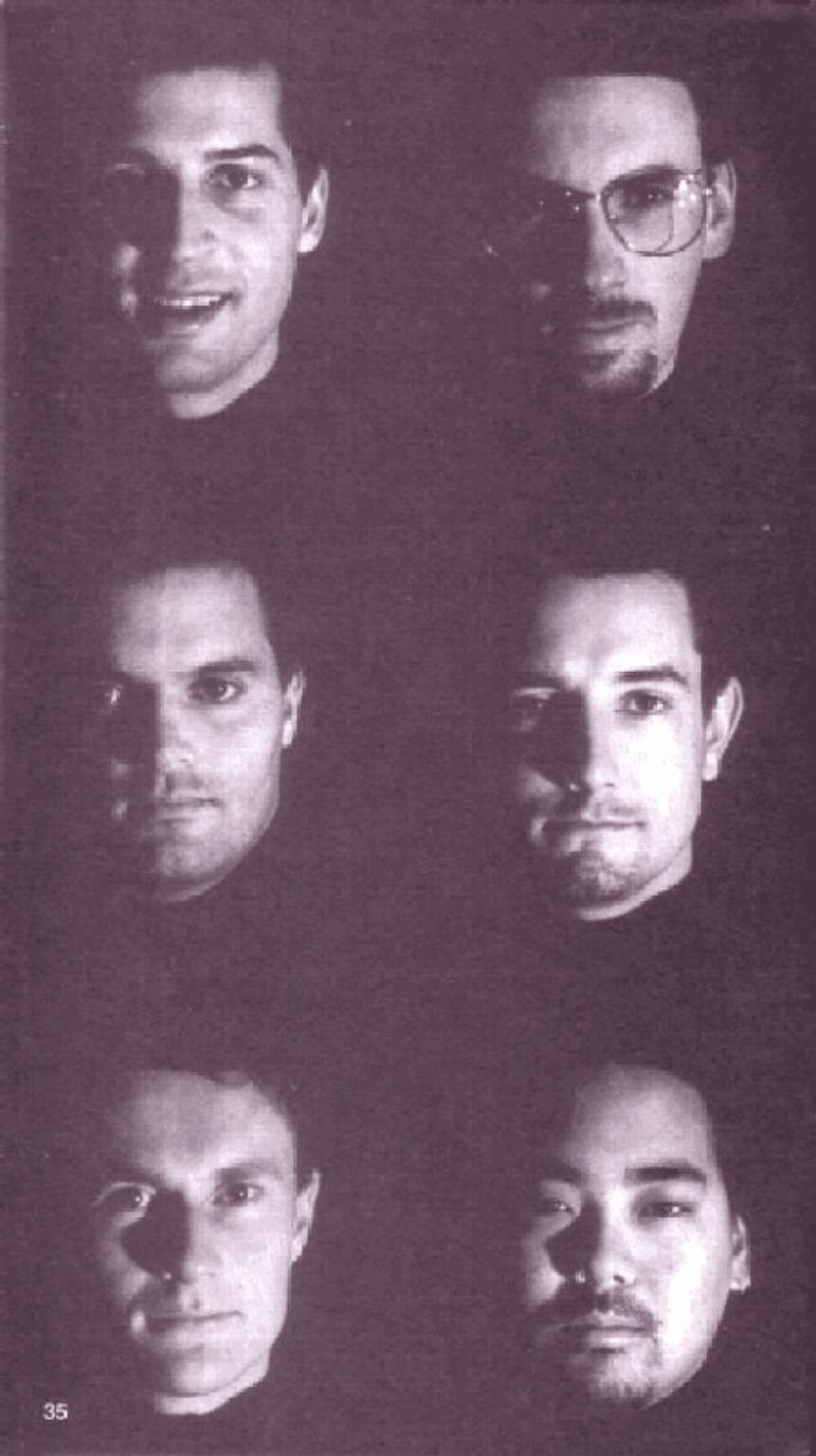
Most of the time, keeping Peter moving along is the best plan of action. But how can you stop him, or slow him down, when you need to? Click.

- Making cookies with butter-flavored shortening rather than butter or margarine keeps them from flattening out too much during baking.
- Finding the can of worms is one way to get a continue, the other...well, that's fuel for thought.





**HEY-
WHO
MADE
THIS
MESS?**



CREDITS

PROGRAM
David Perry

ADDITIONAL PROGRAMMING
Nicholas Jones
Andy Astor

ORIGINAL CONCEPT
Douglas TenHapel

DIRECTING ANIMATOR
Mike Dietz

ANIMATORS
Edward Schofield
Douglas TenHapel

ART DIRECTOR
Nick Bruty

LEAD ARTIST
Steve Crow

LEVEL DESIGNER
Tom Tanaka

INK AND PAINT
Eric Ciccone
Mike Pilotti

CLEAN UP
Clark Borenstein
Ryan Silva
Nicky Wilson

ASSISTANT ARTIST
Jim Shen

MUSIC & SOUND FX
Mark Miller

DESIGNED BY
Mara, Mary Shiny Meetings

PRODUCED BY
David Luehmans

DEVELOPMENT TOOLS BY
Ancy Astor
Don Cheng
PSY-Q
Rob Northam Computing

SPECIAL THANKS
Playmates Toys
Richard Sallis
Becky Tran
Bug Busters
Game Test
Michael Koelsh
Smith Finley & Co.
Galin Harris Communications
Moore & Price Design



Interactive Entertainment

ENTERTAINMENT 33™
© 1994 SHINY ENTERTAINMENT INC.
ALL RIGHTS RESERVED

AtariGuide



NOTES

ARTIST: [unclear]
[unclear]



FOR MOUNT ON THE LEFT



**EARTHWORM
JIM**
© SHINY ENTERTAINMENT
1993 12-8-92



THE MAIN PART
E.W.J.'S HORN
IS AN INVERTED
HORN OR CONE
KEEPING ME
AT THE TOP

SUGGESTION

LIMITED WARRANTY PLAYMATES INTERACTIVE ENTERTAINMENT WARRANTY

Playmates Interactive Entertainment warrants to the original purchaser of this Playmates Interactive Entertainment product that this Game Cartridge is free from defects in material and workmanship for a period of ninety (90) days from the date of purchase. This Playmates Interactive Entertainment product is sold "as is," without expressed or implied warranty of any kind, and Playmates Interactive Entertainment is not liable for any losses or damages of any kind resulting from the use of this product. Playmates Interactive Entertainment agrees for a period of ninety (90) days to either repair or replace, at its option, free of charge, the Playmates Interactive Entertainment product. Send product postage paid, along with dated proof of purchase, to the address shown below.

This warranty shall not be applicable and shall be void if the defect in the Playmates Interactive Entertainment product has arisen through abuse, unreasonable use, mistreatment or neglect. THIS WARRANTY IS IN LIEU OF ALL OTHER WARRANTIES AND NO OTHER REPRESENTATIONS OR CLAIMS OF ANY NATURE SHALL BE BINDING ON OR OBLIGATE PLAYMATES INTERACTIVE ENTERTAINMENT. ANY IMPLIED WARRANTIES APPLICABLE TO THIS SOFTWARE PRODUCT, INCLUDING WARRANTIES OF MERCHANTABILITY AND FITNESS FOR A PARTICULAR PURPOSE, ARE LIMITED TO THE NINETY (90) DAY PERIOD DESCRIBED ABOVE. IN NO EVENT WILL PLAYMATES INTERACTIVE ENTERTAINMENT BE LIABLE FOR INCIDENTAL OR CONSEQUENTIAL DAMAGES RESULTING FROM POSSESSION, USE OR MALFUNCTION OF THE PLAYMATES INTERACTIVE ENTERTAINMENT SOFTWARE PRODUCT.

Some states do not allow limitations as to how long an implied warranty lasts and/or exclusions of liability may not apply to you. This warranty gives you specific legal rights, and you may also have other rights which vary from state to state.

Playmates Interactive Entertainment
16200 S. Trojan Way
La Mirada, CA 90638
Customer Service (714) 562-1720

Patents: U.S. # 5,444,426; 5,565,866/5,462,076; 5,525,555; Europe # 602,144;
Canada # 1,183,276/1,022,351; Hong Kong # 94-4332; Germany # 2,613,826;
Singapore # 98-1651/K; # 1,535,309; France # 1,607,029; Japan #
052,396/82-305003 (Pending)



THE GREAT
Handy Guide



LICENSED BY SEGA ENTERPRISES, LTD. FOR
PLAY ON THE SEGA™ GENESIS™ SYSTEM.

SEGA AND GENESIS ARE TRADEMARKS
OF SEGA ENTERPRISES, LTD.
ALL RIGHTS RESERVED.



Item No. 2200

Distributed by

Playmates Interactive Entertainment 16200 S. Trojan Way La Mirada, CA 90638
FOR CONSUMER SERVICE PLEASE CALL (714) 562-1720



Developed by

Earthworm Jim™ ©1994
Shiny Entertainment, Inc.™
All Rights Reserved

HotariGuide

Printed in U.S.A.