

SEGA™

<http://www.replacementdocs.com>

GENESIS



INSTRUCTION MANUAL



MANUFACTURED FOR PLAY ON
THE SEGA™ GENESIS™ SYSTEM.



WARNING:

READ BEFORE USING YOUR SEGA VIDEO GAME SYSTEM

A very small percentage of individuals may experience epileptic seizures when exposed to certain light patterns or flashing lights. Exposure to certain patterns or backgrounds on a television screen or while playing video games may induce an epileptic seizure in these individuals. Certain conditions may induce undetected epileptic symptoms even in persons who have no history of prior seizures or epilepsy. If you, or anyone in your family, has an epileptic condition, consult your physician prior to playing. If you experience any of the following symptoms while playing a video game—dizziness, altered vision, eye or muscle twitches, loss of awareness, disorientation, any involuntary movement, or convulsions—**IMMEDIATELY** discontinue use and consult your physician before resuming play.

Warning to owners of projection televisions: Still pictures or images may cause permanent picture-tube damage or mark the phosphor of the CRT. Avoid repeated or extended use of video games on large-screen projection televisions.



This official seal is your assurance that this product meets the highest quality standards of SEGA™. Buy games and accessories with this seal to be sure that they are compatible with the SEGA™ GENESIS™ SYSTEM.

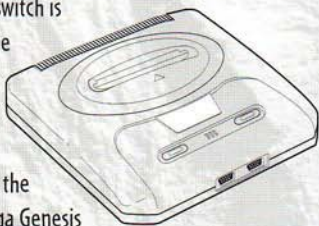


Contents

Starting the Game	1
Handling Your Sega Cartridge	1
Primal Rage – The Story	2
General Controls	4
Controls Reference	5
Start/Options Select	6
Dino Select	11
Rage	12
Domination of the Urth	14
Refueling	15
Dino Profiles and Moves	15
Credits	23

STARTING THE GAME

1. Make sure the power switch is OFF and there is no game cartridge slot on the Sega Genesis System.
2. Insert the *Primal Rage* cartridge firmly in the cartridge slot on the Sega Genesis System and turn the system on.



HANDLING YOUR SEGA GENESIS CARTRIDGE

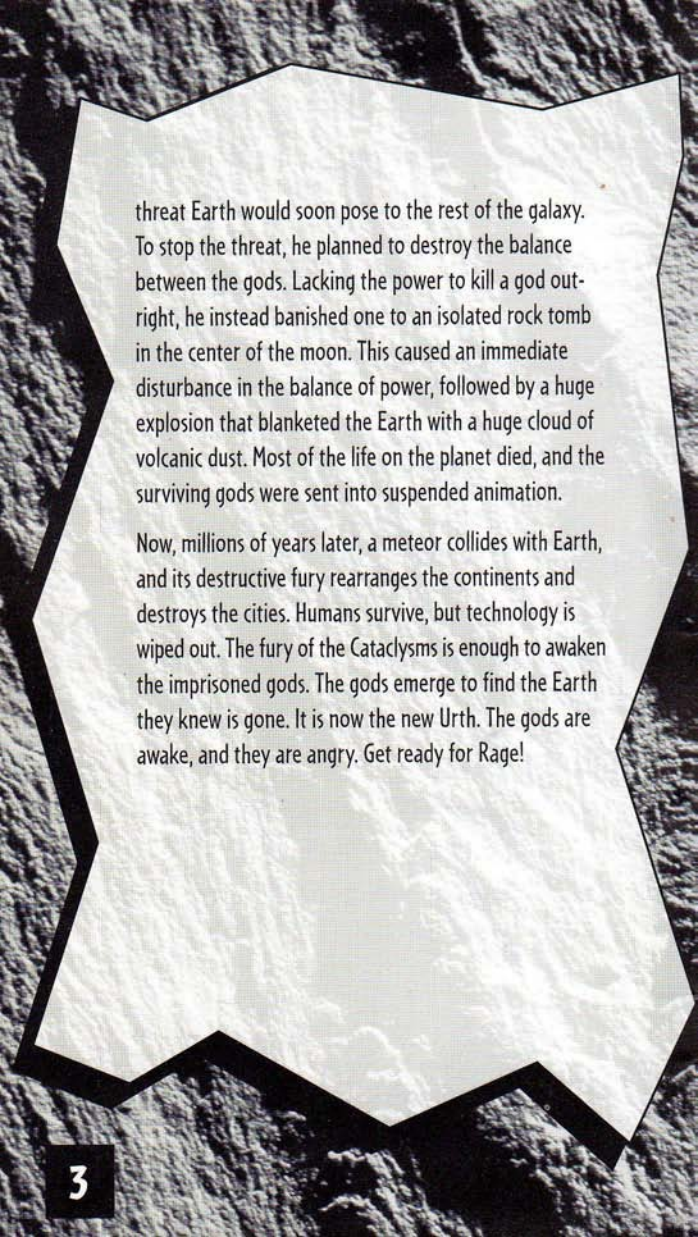
- This cartridge is intended exclusively for the Sega™ Genesis™ System.
- Do not bend it, crush it, or submerge it in liquids.
- Do not leave it in direct sunlight or near a radiator or other source of heat.
- Be sure to take an occasional recess during extended play, to rest yourself and the Sega cartridge.

PRIMAL RAGE — THE STORY

Eons ago, before humans walked the planet, there was rage. Life on Earth was complex, as were the instincts of the planet's life-forms. In order to grow and multiply, there was a delicate balance between the desperate need to protect one's own life and the need to feed off the life energy of the others. As these instincts evolved, so did the gods.

These gods embodied the spirits of Hunger and Survival, Life and Death, Insanity and Decay, and especially, Good and Evil. They took the form that most suited their needs and fought countless battles on the primordial frontiers of the Earth. Life on Earth slowly multiplied, and the gods became more powerful and their battles more intense. When life had spread to all corners of the Earth, the skies shook and the Earth trembled with the fevered pitch of the god's battles. Dinosaurs were the dominant animals on land, and great forests covered almost all available space. New life forms evolved at a rapid rate, and civilizations emerged.

Then the delicate balance was disrupted. Balsafas, a great wizard from a parallel dimension, recognized the



threat Earth would soon pose to the rest of the galaxy. To stop the threat, he planned to destroy the balance between the gods. Lacking the power to kill a god outright, he instead banished one to an isolated rock tomb in the center of the moon. This caused an immediate disturbance in the balance of power, followed by a huge explosion that blanketed the Earth with a huge cloud of volcanic dust. Most of the life on the planet died, and the surviving gods were sent into suspended animation.

Now, millions of years later, a meteor collides with Earth, and its destructive fury rearranges the continents and destroys the cities. Humans survive, but technology is wiped out. The fury of the Cataclysms is enough to awaken the imprisoned gods. The gods emerge to find the Earth they knew is gone. It is now the new Urth. The gods are awake, and they are angry. Get ready for Rage!

GENERAL CONTROLS

The manual refers to following controls:

3 Button Controller:



6 Button Controller:



CONTROL REFERENCE

Throughout this manual, Dino fighting moves and special moves are referred to in combinations of button pushes and multiple D-Pad directions. Use this reference to refine your button pushes and D-Pad presses.

3-Button Controller:

Start Button = Upper Quick (1)

A Button = Upper Fierce (2)

B Button = Lower Quick (3)

C Button = Lower Fierce (4)

6-Button Controller:

X Button = Upper Quick (1)

Y Button = Upper Fierce (2)

A Button = Lower Quick (3)

B Button = Lower Fierce (4)

Z Button = Nothing

C Button = Nothing

(See **6 Button Pad Configuration**,
pg. 10, for Z and C Button Configurations).

Start = Pause

D = D-Pad Down

U = D-Pad Up

T = D-Pad Toward your opponent

A = D-Pad Away from your opponent

For Example: Hold Buttons X+Y and D-Pad T/A=Hold Buttons X+Y simultaneously and Press D-Pad Toward then Away from opponent

Note: Both T(oward) and A(way) D-Pad movement are actually **Left** and **Right** directions depending on which side your opponent is located.

Power Moves

Quick is a quick attack. **Fierce** is a slower, more damaging attack. For a **power move**, press **Quick** and **Fierce** simultaneously to attempt a more powerful attack.

START/OPTIONS MENU

At the main title screen, press the **START** Button to go to the Start/Options Screen. Press the **D-Pad Up** or **Down**, then press any button to select one of these two options:

START

When you select this option, you'll go directly to the Dino Select Screen (see **Dino Select**, pg. 11). One or two

players can then select one of the seven available dinosaurs to fight for Urth domination. In 1 Player mode, you'll face each of the other 7 dinosaurs in their home territory. With 2 Player mode, you'll both battle for Urth domination until one player conquers all lands.

OPTIONS

Select this option to go to the Options Screen, and make various changes to your gameplay. At the Options Screen, press the **D-Pad Up** or **Down** to move the flashing arrows next to the option you want to change. Press **Left** or **Right** to cycle through the choices. Here are the options:

- **Game Type** - Select from one of two game play options.

Normal Game - This option is the game's default setting. Players select dino's and conquer lands for Urth domination.

1 Player Training - Select this option if you want to practice the games various bone-crushing moves and dinosaur fighting tactics. Press the **D-Pad Down** to move the selection arrows next to **CPU OPPONENT**, then

press the **D-Pad Left** or **Right** to choose the dino you want to fight. Select **Done**, and you will go to the Dino Select Screen (see **Dino Select**, pg. 11).

- **Difficulty** - You can set the game's difficulty level from **1** (easiest) to **16** (most difficult). Default is **7**. As you improve your fighting skills, you can set the difficulty level to a higher setting.
- **Number of Credits** - This option allows you to set the game to allow from **1** to **20** game credits (continues). As you get better at *Primal Rage*, you can set this option to a lower setting, and create an even greater challenge.
- **Number of Rounds** - You can set the number of rounds you'll fight your opponent before the winner is determined. Select **5** for a best three out of five, **3** for a best two out of three, or **1** for a one time winner-take-all rage. If both players have an equal number of wins and tie in the final round, the game will go into Sudden Death. If there is tie in sudden death, both players lose the battle.

- **Round Time** - Each bout has a set time in which the winner must be determined. You can set the game's bout time to challenge your opponent to get a quick kill. The round time can be set from 30 to 80 seconds in 5 second increments. The default is 55 seconds. As you improve your fighting and accomplish quicker kills, set this option lower to put the pressure on you and your opponent.

- **Damage Modifiers** - This option lets you adjust your Life Bar to any amount you want. The default is set to **100%**. It can be set anywhere between **50 - 150%**. The strategy is to give a less experienced player more life to compete longer against an experienced player. Experienced players should set a lower Life Bar, and beginners should set their Life Bars high. Press the **D-Pad Up** or **Down** to select the percentage for the Left or Right Player, then press **Left** or **Right** to make changes to the strength of your player. As you make changes, the strength of your dino will be displayed below the percentages.

- **Gore Switch** - Select **GORE ON** or **GORE OFF** (default **GORE ON**). If **GORE OFF** is selected, there is no blood,

eating people or Fatalities. This includes the refuel round that occurs before the Final Battle in the 1 Player Game. Instead of refueling, you will receive an additional 50% power to your Life Blood Bar.

- **3 Button Pad Configuration** - Press the **D-Pad Left** or **Right** to cycle through the various choices and make adjustments to your button configuration. The new configuration will be displayed. When you find the setting you like, select **Done** to return to the Options Menu.

- **6 Button Pad Configuration** - Press the **D-Pad Left** or **Right** to cycle through the various choices and make adjustments to your button configurations. The six button controller can be configured so that you can make the **Z** or **C Button** activate one of three special moves (see your chosen Dino's profile for the special moves). The new configuration will be displayed. When you find the setting you like, select **Done** to return to the Options Menu.

- **Reset High Score Table** - Choose either **Abort!** or **Do It!** (default **Abort!**). If you select **Do It!**, the game will reset the High Score Table. Select **Abort!** if you change your mind and want to leave the scores as they are.

- **Restore Factory Default** - Select this option anytime you want to return all options to their default settings. Choose either **Abort!** or **Do It!** (default **Abort!**). If you select **Do It!**, the game will restore to the Factory Default. Select **Abort!** if you change your mind and want to leave the settings as they are.
- **Done** - When you've finished making changes, select this option to return to the Start/Options Screen.

DINO SELECT

After you've selected

your game type and set your options the way you want, you'll need to select your character.

Press the **D-Pad Left** or **Right** to

highlight the dino you want, then press the **START Button** to select. A Dino match up screen will appear for a moment, then you'll begin the Rage.



RAGE!

Life Blood Bars

Brain Stem Bars

Timer



Win Marker

Hit combos

Now that the preliminaries are over, get ready to Rage! The main Rage screen displays each dino's name, a red Life Blood Bar, a yellow Brain Stem Bar and a Timer. Various other functions appear on-screen during each rage. Read the following to familiarize yourself with *Primal Rage*:

- **Life Blood Bar** - The red Life Blood Bar is displayed above your dino's name in the upper right or left side of the screen. It diminishes as you take on damage, and the match ends when one dino's bar has been depleted.
- **Brain Stem Bar** - This yellow bar is located directly above the name and indicates your dino's brain

strength. When the yellow bar is depleted, you dino will appear dazed and vulnerable - but not beaten. You can snap out of the daze by moving the **D-Pad** quickly **Left** and **Right**, or when your opponent nails you with one of the various moves.

- **The Timer** - There are various time settings you can set your rage to (see **Options**, pg.7). Each bout is timed. When the timer winds down to 10 seconds, the remaining seconds will begin to beep. This is your warning that the match is about to end. If time runs out before a dino is beaten, the earth will lift both combatants into the air. The dino with the most life remaining will win the rage.

- **Win Icon** - Each time you win a bout, an icon will appear on the winner's side under the timer. Depending on how you have set Rounds (see **Number of Rounds**, pg. 8), the winner of the bout will have to accumulate 1, 2, or 3 icons.

- **Hit Combos** - During each rage, dinos can inflict heavier damage to their opponent with multiple hit combos. The more hit combination moves you connect on, the

heavier the damage you'll inflict. When you put a nice hit combo together, it will appear on your side of the screen (Left side for Player 1, Right side for Player 2).

DOMINATION OF THE URTH

Each time you win a rage in Normal Game mode, the Urth Screen appears and tells you what portion of the world you have conquered. Continue to win your rage bouts until you have conquered all lands. Once you have conquered the Urth, your chosen dino will take on all other dinos one-at-a-time in The Final Battle Ground (difficulty 7 or higher only). There is no timer, and your Life Blood Bar is not reset, so you'll have to dispose of your enemy as quickly as you can. If you have set the game to allow continues (see **Options**, pg. 7), you may choose to continue the game if your dino is beaten.



REFUELING

In the 1 Player mode, with a difficulty level of 7 or higher and Gore set **On** (see **Gore Switch**, pg. 9), you will need to refuel your dino for the final battle. This process takes place only after you've defeated all other dinosaurs. To refuel, you will have to eat as many worshippers as possible in 20 seconds.

DINO PROFILES AND MOVES

Read the following profiles to get familiar with each of the dinosaurs available in *Primal Rage*. Button references in each profile are listed as numbers. Numbers 1 through 4 refer to buttons on your 3 and 6 Button controllers. (See **Control Reference**, pg. 5, for a rundown of D-Pad and controller button descriptions).

Each dino's special move is numbered (e.g. Sp. 1).

When configuring your controller (see **3 and 6 Button Pad Configuration**, pg. 10), refer to the special move's number to configure the special moves).

ARMADON

For over a million years, Armadon dwelled in his cave beneath the Earth's crust, telepathically linked to the biomass. The Cataclysms and the battles for supremacy over the changing planet tortured him. Now, he has risen to settle things once and for all.



Basic Moves:

Button 1 = Snout Gouge

Button 2 = Upper Snout Gouge

Button 4 = Tail Whip

Button 4 + D-Pad Down = Overhead Tail Whip

Button 2 + D-Pad Down = Deep Upper Snout Gouge

Button 4 + D-Pad Up = Jumping Tail Whip

Button 2 + D-Pad Up = Jumping Snout Gouge

Special Moves:

Bed-O-Nails Hold Buttons 2+3 and D-Pad U/D (*Sp. 1)

Iron Maiden Hold Buttons 2+3 and D-Pad A/U/T (*Sp. 2)

Mega Charge Hold Buttons 1+3 and D-Pad A/D/T (*Sp. 3)

* Sp. refers to Special

BLIZZARD

Blizzard is a noble god, the essence of the animal spirit. Frozen for millennia at the heart of an immense glacier in the Himalayas, Blizzard was released when the Earth met the Great Meteor. He lived high in the mountains, descending only when threatened. His animal power and age-old wisdom makes him almost unstoppable.

Basic Moves:

Button 1 = Right Jab

Button 2 = Left Jab

Button 3 = Left Low Punch

Button 4 = Left Uppercut

Button 4 + D-Pad Down = Leg Undercut

Button 1 + D-Pad Up = Flying Elbow

Button 4 + D-Pad Up = Flying Kick

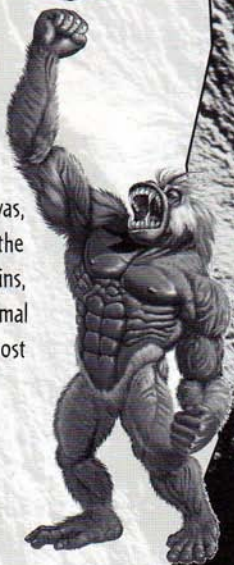
Special Moves:

Mega Punch (short) Hold Buttons 1+2 and D-Pad D/T (*Sp. 1)

Freeze Breath Hold 1+2+3 and D-Pad A/T (*Sp. 2)

Air Throw Hold Buttons 2+3 (*Sp. 3)

* Sp. refers to Special



CHAOS

Chaos, the mightiest witch doctor on the first continent, wanted to control the evolution of humanity. During his power quest, he cast a mighty spell that backfired and turned him into a foul, disgusting beast, forced to wallow in his own filth for eons. During the Cataclysm, Chaos prayed to Throshti, god of Carrion, for release. To restore his greatness, he must defeat all his enemies. When his task is completed, Chaos will regain control of his life and lead his tribe to greatness.

Basic Moves:

Button 1 = Left Jab

Button 2 = Right Cross

Button 3 = Low Punch

Button 4 = Right Head Bash

Button 4 + D-Pad Down = Leg Undercut

Button 1 + D-Pad Up = Flying Elbow

Button 4 + D-Pad Up = Flying Kick



Special Moves:

Grab-N-Throw

Hold Buttons 2+4 and D-Pad T/A (**Sp. 1)

Power Puke (Fast)

Hold Buttons 1+4 and D-Pad U/T (**Sp. 2)

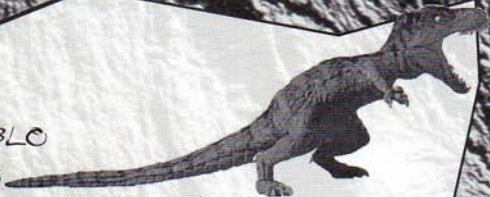
Ground Shaker

Hold Buttons 2+3 and D-Pad A/AU/AD (**Sp. 3)

* Sp. refers to Special

DIABLO

Diablo is



evil in its purest form. He was released from a fiery prison deep within Earth, to which he was drawn by the pain and torment caused in the great Cataclysms. When he has conquered the planet, he will live just to torture it. If none are left to oppose him, he will burn the entire planet, sparing only the cruel and vicious.

Basic Moves:

Button 1 = Straight Chomp

Button 2 = Quick Jab Chomp

Button 3 = Right Leg Rip

Button 4 = Tail Whip

Button 1 + D-Pad Down = Low Chomp

Button 4 + D-Pad Down = Low Tail Whip

Button 2 + D-Pad Up = Jumping Lunge Chomp

Button 4 + D-Pad Up = Jumping Kick

Special Moves:

Torch Hold Buttons 1+3 and D-Pad U/T (*Sp. 1)

Hot Foot Hold Buttons 2+4 and D-Pad UA/DT (*Sp. 2)

Inferno Flash Hold Buttons 2+3+4 and D-Pad U (*Sp. 3)

* Sp. refers to Special

SAURON

Sauron is the god of Hunger. When he was released from his sleep of ages by the catastrophe, his instinct forced him to devour human flesh to remain immortal. The hungry hordes of humanity worshipped him but lived in fear of his presence. Because, many humans sought refuge with other rulers of the planet, Sauron must defeat the others and feast on their followers.



Basic Moves:

Button 1 = Straight Chomp

Button 2 = Lunge Chomp

Button 3 = Right Leg Rip

Button 4 = Tail Whip

Button 2 + D-Pad Down = High Face Chomp

Button 4 + D-Pad Down = Low Tail Whip

Button 2 + D-Pad Up = Jumping Lunge Chomp

Special Moves:

Primal Scream

Hold Buttons 1+3 and D-Pad D/U (*Sp. 1)

Earthquake Stomp

Hold Buttons 1+2+4 and D-Pad U/D (*Sp. 2)

Cranium Crusher

Hold Buttons 1+4 and D-Pad D/U (*Sp. 3)

* Sp. refers to Special

TALON

Talon was the great chief of the Raptor Clan on a hidden South Pacific island for eons.

When the Great Meteor rearranged the continents, Talon's island came in contact with the mainland.

Wanting to ensure the safety of his wives and children, Talon set out to eliminate all dangers to his clan's welfare. Talon prefers to live in luxury, keeping humans as cattle and hunting them for sport.



Basic Moves:

Button 1 = Left Slash

Button 2 = Upper Chomp

Button 3 = Slash Kick

Button 4 = Round House Slash Kick

Button 3 + D-Pad Down = Sliding Undercut Slash

Button 4 + D-Pad Up = Jumping Kick Slash

Button 2 + D-Pad Up = Jumping Slash Attack

Special Moves:

Brain Basher Hold Buttons 2+3 and D-Pad A/U/T (*Sp. 1)

Pounce and Flip Hold Buttons 2+3 and D-Pad T/D/DT (*Sp. 2)

Frantic Fury Hold Buttons 1+4 and D-Pad D/T (*Sp. 3)

* Sp. refers to Special

VERTIGO

Long ago a sorceress named Vertigo appeared from another dimension. In a great magical battle during the Mesozoic Wars, Vertigo was banished to the moon by the arch-mage Balsafas. The meteor crash weakened the old shields enough for Vertigo to return and enslave the planet once again. Once victorious, she plans to enslave hordes of humans and have them build an insane palace in multiple demensions.

Basic Moves:

Button 1 = Jab Chomp

Button 2 = Lunge Chomp

Button 3 = Tail Whip

Button 4 = Snap Tail Whip

Button 1+ D-Pad Down = Low Jab Chomp

Button 2+ D-Pad Down = Low Lunge Chomp

Button 3 + D-Pad Up = Jumping Tail Jab

Button 4 + D-Pad Up = Jumping Tail Whip



Special Moves:

Voodoo Spell

Hold Buttons 2+3 and D-Pad A/A (*Sp. 1)

Venom Spit (Slow)

Hold Buttons 2+4 and D-Pad T/T (*Sp. 2)

Teleport

Hold Buttons 2+4 and D-Pad D/D (*Sp. 3)

* Sp. refers to Special

HIGH SCORES

If you're good enough to make the top ten scorers, the High Score Screen will appear. Press the **D-Pad Left**, **Right**, **Up** or **Down** to scroll through the available letters, then press a button to select the letter. When you have selected your third letter (or 18 letters if you have the top score), select **End** to save the entry.

CREDITS

Original Coin-Op Development

Producer and Programmer: Dennis Harper

Programmer/Designer: Frank Kuan

Art Director: Jason Leong

Game Designer: J. Cameron Petty

Audio Designer: Jeanne Parson

Associate Producer: Steve Riesenberger

Consumer Development

Senior Producer: Ken Humphries

Associate Producer: Tom MacDevitt

TWI Game Testers: John Arvay, Jr., Rob Boone, Kevin
Filson, Mike Kruse

Product Marketing Manager: John Golden

Manual: Jon Mongelluzzo

Special Thanks: John Fisher, Curtis Soldano
and Derryl DePriest

Probe Entertainment

Programmer: Cameron Sheppard

Artist: Terry Ford

Musician: Andy Brock

QA Manager: Gary Patino

Testers: Nick McGee, Mike Movell, Mark Viccary, James
Brown, Cliff Ramsey

Producer: Robert O'Farrell

Assistant Producer: James Stewart and James Bradstock

Special Thanks: Ralor Knight, Keith Burkhill

90 DAY LIMITED WARRANTY

Time Warner Interactive, Inc. warrants to the original purchaser of this software product that the medium on which the computer program is recorded is free from defects in material and workmanship for a period of ninety (90) days from the date of purchase. Time Warner Interactive, Inc. agrees to repair or replace, at its option, free of charge, any Time Warner Interactive, Inc. software product. **Before any returns are accepted you must call our warranty department (408) 473-9400 for a return authorization number.** You may then return the product postage paid, together with the return authorization number, sales slip or similar proof of purchase.

THIS WARRANTY IS NOT APPLICABLE TO NORMAL WEAR AND TEAR. THIS WARRANTY SHALL NOT BE APPLICABLE IF A DEFECT ARISES OUT OF ABUSE, UNREASONABLE USE, MISTREATMENT OR NEGLIGENCE OF THE SOFTWARE PRODUCT. THIS WARRANTY IS IN LIEU OF ALL OTHER WARRANTIES, WHETHER ORAL OR WRITTEN, EXPRESSED OR IMPLIED. ANY IMPLIED WARRANTIES OF MERCHANTABILITY AND FITNESS FOR A PARTICULAR PURPOSE ARE HEREBY EXCLUDED. THIS WARRANTY IS LIMITED TO THE 90 DAY PERIOD DESCRIBED ABOVE AND IN NO EVENT WILL TIME WARNER INTERACTIVE, INC. BE LIABLE FOR CONSEQUENTIAL OR INCIDENTAL DAMAGES RESULTING FROM THE BREACH OF

ANY EXPRESS OR IMPLIED WARRANTIES RELATING TO THE SOFTWARE PRODUCT.

The provisions of this warranty are valid in the United States only. Some states do not allow limitations on how long an implied warranty lasts or exclusion of consequential or incidental damages, so the above limitations and exclusion may not apply to you. This warranty gives you specific legal rights, and you may also have other rights which vary from state to state. Address all correspondence regarding this Time Warner Interactive, Inc. game to:

Time Warner Interactive, Inc. Warranty Department,
P.O. Box 360782
Milpitas, CA 95036-0782

REPAIRS AFTER EXPIRATION OF WARRANTY: If your Time Warner Interactive, Inc. game cartridge develops problems after the 90-day warranty period, you may contact Time Warner Interactive, Inc. at 1-408-473-9400. If the Time Warner Interactive, Inc. customer service technician is unable to solve the problem by phone, they will provide you with a RETURN MATERIAL AUTHORIZATION number (RMA). Write this number on the outside of the package used to return your defective

game cartridge to Time Warner Interactive. Return the defective game cartridge, freight prepaid, to Time Warner Interactive, Inc. at the address below. Enclose a check or money order for \$20.00, payable to "Time Warner Interactive, Inc." Time Warner Interactive, Inc. will, at its option, subject to the conditions above, repair the cartridge or replace it with a new or repaired cartridge. If replacement cartridges are not available, the defective will be returned and the \$20.00 payment refunded.

Time Warner Interactive, Inc.
Attn: Customer Service
675 Sycamore Drive
Milpitas, CA 95035-0782

PATENTS: U.S. #4,442,486/4,454,594/4,462,076; Europe #80244;
Canada #'s 1,183,276/1,082,351; Hong Kong #88-4302; Germany #2,609,826;
Singapore #88-155; U.K. #1,535,999; France #1,607,029; Japan #1,632,396

Save \$4.00

Off One-Day Adult Admission at Six Flags Theme Parks.



TIME WARNER
INTERACTIVE



Six Flags[®]
Theme Parks

A Time Warner Entertainment Company

**Six Flags
Over Texas**
Arlington, TX
(817) 640-8900

**Six Flags
Over Georgia**
Atlanta, GA
(404) 948-9290

**Six Flags
Over Mid-America**
St. Louis, MO
(314) 938-5300

**Six Flags
Great America**
Chicago, IL
(708) 249-1776

**Six Flags
Great Adventure**
Jackson, NJ
(908) 928-2000

**Six Flags
AstroWorld**
Houston, TX
(713) 799-8404

**Six Flags
Magic Mountain**
Los Angeles, CA
(805) 255-4100

NOT SPONSORED BY SEGA

Present this coupon at Six Flags Theme Parks and receive \$4.00 off the price of a full price one-day adult admission. Offer good for up to four people. Offer valid on any regular operating day through May 27, 1996. Not valid on a Child, Senior Citizen Safari, After 4 p.m., Six Flags WaterWorld, Six Flags Hurricane Harbor ticket or in combination with any other discounted offers. Call Parks for operating schedules.

LOONEY TUNES, characters, names, and all related indicia are trademarks of Warner Bros. ©1995.
©1995 Six Flags Theme Parks Inc. A Time Warner Entertainment Company.

T-44421 C-44422

PROBLEMS OR QUESTIONS?

We recommend that you read this instruction booklet to learn and master the operation of this game. Should you have any further problems or questions about playing this game, please call a game counselor at

408-433-3999

Monday through Friday from
8:00 am – 5:00pm Pacific Time.

SEGA AND GENESIS ARE TRADEMARKS
OF SEGA ENTERPRISES, LTD.
ALL RIGHTS RESERVED.

Time Warner Interactive, Inc.
675 Sycamore Drive
Milpitas, CA 95035

Printed in USA