

The Taito logo features the word "TAITO" in a bold, blue, sans-serif font. The letter "A" is stylized with a blue triangle pointing upwards from its center.

TAITO AMERICA CORPORATION
390 Holbrook Drive
Wheeling, IL 60090

Sega and Genesis are trademarks of Sega Enterprises Ltd.
Licensed by Sega Enterprises Ltd. for play on the Sega™ Genesis™ System.

Taio and Chase H.Q. II are registered trademarks of Taito Corporation. © 1992 All Rights Reserved.

Printed in Japan



INTRODUCTION

The tach explodes into the redline pulling the engine into a screaming bass frenzy that drowns out the wailing siren. Slamming in the clutch you shift into high; the acceleration pushes you against your seat. Whipping through traffic you can see the getaway car burning down the road. Slap the turbo and the boost kicks in throwing the world into a blur. You're on his tail. Cutting hard on the wheel you send your car slamming into his. Still not yielding. You smash him again and again until his car is a smoking hunk of road junk. You've made the collar again.

Handling Your Cartridge

The Sega Genesis Cartridge is intended for use exclusively for the Sega Genesis System.

- **Do not bend it, crush it, or submerge it in liquids.**
- **Do not leave it in direct sunlight or near a radiator or other source of heat.**
- **Be sure to take an occasional recess during extended play, to rest yourself and the Sega Cartridge.**

Warning to owners of projection televisions: Still pictures or images may cause permanent picture-tube damage or mark the phosphor of the CRT. Avoid repeated or extended use of video games on Large-screen projection televisions.

**TAITO™**

TAITO AMERICA CORPORATION
390 Holbrook Drive
Wheeling, Illinois 60090 U.S.A.



This official seal is your assurance that this product meets the highest quality standards of SEGA™. Buy games and accessories with this seal to be sure that they are compatible with the SEGA™ GENESIS™ SYSTEM.

Sega™ and Genesis™ are trademarks of Sega Enterprises Ltd. Taito™ and Chase H.Q. II™ are trademarks of Taito Corporation. © 1992 All Rights Reserved.

TABLE OF CONTENTS

Starting up your system	4
Jump Start	5
Options	6-7
Hot Pursuit Handbook	8-9
Dispatch	10-11
Road Hazards	12-13
Assignment Notes	14
Limited Warranty	15

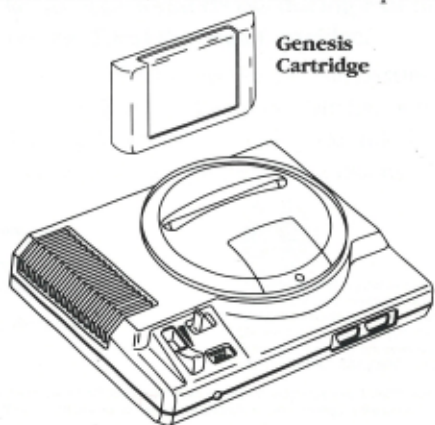


STARTING UP YOUR SYSTEM

1. Set up your Genesis System, following the instructions in your Genesis System Instruction Manual. Plug in Control Pad 1.
2. Make sure the console's power switch is turned Off.
3. Insert the Chase H.Q.II cartridge into the console with its label facing towards you. Press the cartridge firmly into the slot.
4. Turn the power switch On. The Sega screen appears.
Note: If nothing appears on screen, turn the switch Off. Check your cartridge to make sure it is inserted correctly, and check all cables to make sure they are properly connected. Then try again.

IMPORTANT: Always make sure your Genesis System is turned Off before inserting or removing the game cartridge.

5. Press the **Start** button on Control Pad 1. The pursuit begins.



JUMP START

Cruise through this section to crash into the action.

- Press the **Start** button to advance to the Menu screen.
- Press the **D** button up/down to select Game Start.
- Press the **Start** button to advance to the Dispatch screen.
- Press any button to advance to the Garage screen.
- Press the **D** button left/right to select a vehicle.
- Press any button to enter your selection and begin

* GAME START
OPTIONS



OPTIONS

Options allow you to tailor the game to your playing style.

- From the Menu screen press the **D** button to select Options.
- Press the **Start** button to advance to the Option screen.



- Press the **D** button up/down to select option.
- Press the **D** button left/right to change the setting of selected option.
- Press the **Start** button at any time to return to the Menu screen.
- Select Exit and press any button to return to the Menu screen.

Level - Choose from Normal or Hard.

Credit - Choose from 1,2, or 3 credits.

Sound test - Allows you to hear the music and sound effects from the game.

OPTIONS CONTINUED

- Press the **D** button left/right to select a sound.
- Press the **A,B,** or **C** button to hear your selection.

Gear - Choose from a manual or automatic transmission.

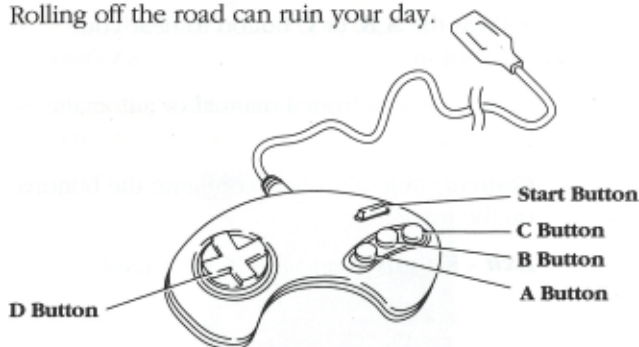
Control - Allows you to configure the buttons on the Joy Pad.

Exit - Returns you to the Menu screen.



HOT PURSUIT HANDBOOK

Before you strap yourself into a road burning bandit bashing machine take the time to learn the controls. Rolling off the road can ruin your day.



Brake - Press **A** button to hit the brakes and slow down.

Accelerator - Press the **B** button to stomp on the gas speed up.

Turbo - Press the **C** button to kick in the turbo for high speed thrills.

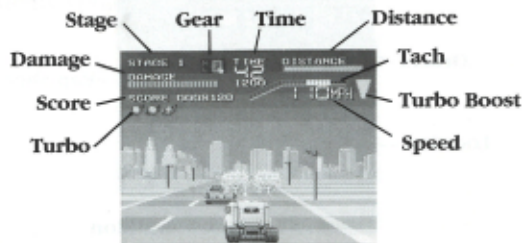
Steering - Press the **D** button left/right to steer left/right.

Shifting - Press the **D** button up to shift into high. Press down to shift into low.

Pause - Press the **Start** button to pause the game during play.

HOT PURSUIT HANDBOOK CONT.

Scan the following section to learn about the instruments in your vehicle. If you don't pay attention to them you could end up a grease spot on the road.



Stage - Indicates current stage.

Gear - Indicates High or Low gear.

Time - Indicates time remaining to catch perpetrator.

Distance - Indicates distance to the criminal.

Damage - Damage the enemy vehicle has taken.

Score - Your current score.

Turbo - The number of Turbos remaining.

Tachometer - Indicates RPMs. Shift into high when it hits yellow.

Speed - Current speed.

Turbo Boost - Indicates boost.

DISPATCH

Orders are orders and dispatch has plenty of them for you. Make sure you listen to Nancy, she has all the information you need to ID and bust the crooks.



Location - Sets the scene.

Road Condition - Gives you a hint as to which vehicle to choose.

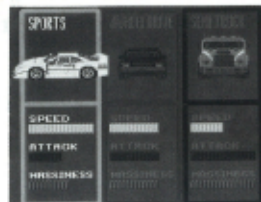
Orders - Tells you what to do.

Rap sheets - Shows you who to bust and what they drive.

DISPATCH CONTINUED

Garage

Run into the garage and pick your ride. Remember to try to match your choice with the road conditions and the enemy vehicle.



Speed - Indicates vehicle's top speed.

Attack - Indicates damage vehicle inflicts on suspect.

Mass - Indicates how quickly your car will recover from a spin.



ROAD HAZARDS

It's not just the criminals. You have to keep an eye peeled for road hazards.

Civilian's Cars - Pass several at once for bonus.

Barricades and Towers - Hit one of these and you'll fly off the road.

Waves - If one of these waves hits you'll spin out.



Rocks and Ramps - Going over these will send you jumping into the air or launch you into two-wheel driving.

Snow and Sand - Smashing into one of these obstacles will slow you down.



ROAD HAZARDS CONTINUED

Ice - Thunder over a patch of ice and you'll spin out.

Toll Booth - Drive through the toll booth.

Forks - Follow the arrows or you'll lose time.



ASSIGNMENT NOTES

WARRANTY

Taito America Corporation warrants to the original purchaser that the Taito Genesis Cartridge shall be free from defects in material and workmanship for a period of ninety (90) days from the date of purchase. If a defect covered by this limited warranty occurs during this 90-day limited warranty period, Taito America Corporation will repair or replace the defective cartridge or component part, at its option, free of charge.

This limited warranty does not apply if the defects have been caused by negligence, accident, unreasonable use, modification, tampering, or any other cause not related to defective materials or workmanship.

Taito America, Corporation
Customer Service Department
390 Holbrook Drive,
Wheeling, Illinois 60090

Repairs After Expiration of Warranty

If your Taito Genesis Cartridge requires repairs after termination of the 90-day warranty period, you may contact the Taito's Customer Service Department at 708-520-9280 during 9:00am to 5:00pm (Central Time). If they are unable to solve the problem by phone, they will advise you of the estimated cost of repair. If you elect to have the repair done, you'll need to return the defective merchandise, freight prepaid and insured against loss or damage, to Taito's Customer Service Department with an enclosed check or money order payable to Taito America corporation for the amount of the cost estimate provided to you by them. If, after inspection, it is determined that your cartridge cannot be repaired, it will be returned to you and your payment will be refunded.

LIMITATIONS ON WARRANTY

Any applicable implied warranties, including warranties of merchantability and fitness for a particular purpose, are hereby limited to ninety (90) days from the date of purchase and are subject to the conditions set forth herein. In no event shall Taito America Corporation be liable for consequential or incidental damages resulting from possession or use of this product.

The provisions of the limited warranty are valid in the United States only. Some states do not allow limitations on how long an implied warranty lasts, or exclusion of consequential or incidental damages, so the above limitation or exclusion may not apply to you. This limited warranty provides you with specific legal rights. You may have other rights which vary from state to state.

Patents: U.S. Nos. 4,442,486/4,454,594/4,462,076; Europe No. 80244;
Canada No. 1,183,276; Hong Kong No.88-4302; Singapore No. 88-155;
Japan No. 82-205605 (Pending)