

# EIGHTEEN WHEELER 18 WHEELER

☆☆☆ AMERICAN PRO TRUCKER ☆☆☆

Travel down the highway in one of 5 big-rigs and race against rival truckers as you haul cargo across the nation in a no-holds barred driving battle. Hang on cause the stakes are high!



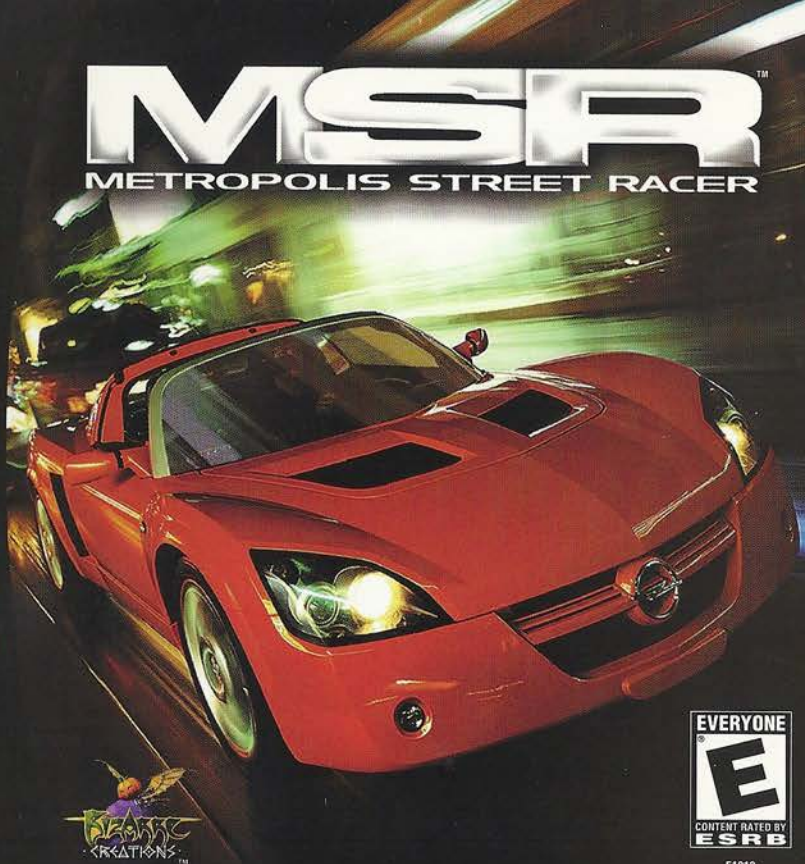
1-2 Players VMU compatible Race Controller VGA Box Standard Controller Jump Pack compatible

RATING PENDING  
RP  
CONTENT RATED BY ESRB

SEGA

# MSPR METROPOLIS STREET RACER

Dreamcast



EVERYONE  
E  
CONTENT RATED BY ESRB

51012



## WARNINGS Read Before Using Your Sega Dreamcast Video Game System

### CAUTION

Anyone who uses the Dreamcast should read the operating manual for the software and console before operating them. A responsible adult should read these manuals together with any minors who will use the Dreamcast before the minor uses it.

### HEALTH AND EPILEPSY WARNING

Some small number of people are susceptible to epileptic seizures or loss of consciousness when exposed to certain flashing lights or light patterns that they encounter in everyday life, such as those in certain television images or video games. These seizures or loss of consciousness may occur even if the person has never had an epileptic seizure.

If you or anyone in your family has ever had symptoms related to epilepsy when exposed to flashing lights, consult your doctor prior to using Sega Dreamcast.

In all cases, parents should monitor the use of video games by their children. If any player experiences dizziness, blurred vision, eye or muscle twitches, loss of consciousness, disorientation, any involuntary movement or convulsion, IMMEDIATELY DISCONTINUE USE AND CONSULT YOUR DOCTOR BEFORE RESUMING PLAY.

To reduce the possibility of such symptoms, the operator must follow these safety precautions at all times when using Dreamcast:

- Sit a minimum of 6.5 feet away from the television screen. This should be as far as the length of the controller cable.
- Do not play if you are tired or have not had much sleep.
- Make sure that the room in which you are playing has all the lights on and is well lit.
- Stop playing video games for at least ten to twenty minutes per hour. This will rest your eyes, neck, arms and fingers so that you can continue comfortably playing the game in the future.

### OPERATING PRECAUTIONS

To prevent personal injury, property damage or malfunction:

- Before removing disc, be sure it has stopped spinning.
- The Sega Dreamcast GD-ROM disc is intended for use exclusively on the Sega Dreamcast video game system. Do not use this disc in any thing other than a Dreamcast console, especially not in a CD player.
- Do not allow fingerprints or dirt on either side of the disc.
- Avoid bending the disc. Do not touch, smudge or scratch its surface.
- Do not modify or enlarge the center hole of the disc or use a disc that is cracked, modified or repaired with adhesive tape.
- Do not write on or apply anything to either side of the disc.
- Store the disc in its original case and do not expose it to high temperature and humidity.
- Do not leave the disc in direct sunlight or near a radiator or other source of heat.
- Use lens cleaner and a soft dry cloth to clean disc, wiping gently from the center to the edge. Never use chemicals such as benzene and paint thinner to clean disc.

### PROJECTION TELEVISION WARNING

Still pictures or images may cause permanent picture tube damage or mark the phosphor of the CRT. Avoid repeated or extended use of video games on large-screen projection televisions.

### SEGA DREAMCAST VIDEO GAME USE

This GD-ROM can only be used with the Sega Dreamcast video game system. Do not attempt to play this GD-ROM on any other CD player; doing so may damage the headphones and/or speakers. This game is licensed for home play on the Sega Dreamcast video game system only. Unauthorized copying, reproduction, rental, public performance of this game is a violation of applicable laws. The characters and events portrayed in this game are purely fictional. Any similarity to other persons, living or dead, is purely coincidental.

## CONTENTS

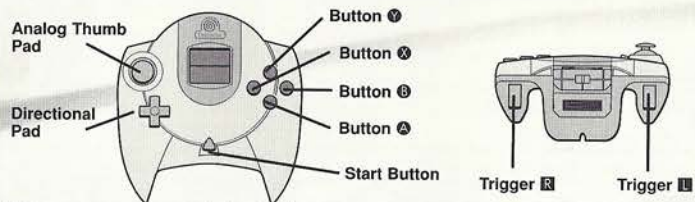
Thank you for purchasing Metropolis Street Racer. Before you start playing the game, please read this instruction manual.

### CONTENTS

<b>Basic Controls</b>	<b>2</b>
<b>Starting The Game</b>	
Starting the game	4
The Home Menu	5
<b>Options</b>	<b>6</b>
<b>Kudos</b>	<b>7</b>
<b>Playing the Game</b>	
Your Garage	9
Street Racing	12
Time Attack	19
Quick Race	19
VMU	20
Internet	20
Multiplayer	21
<b>Hints and Tips</b>	<b>22</b>

- This game is for 1-2 players.
- Before you switch on the power, please connect the Dreamcast peripheral(s) to the console.
- If you wish to reset, press the **A**, **B**, **X**, **Y** and **START** buttons during the game. You will return to the game's Title Screen.
- This game requires a Visual Memory Unit (VMU) for saving the game data.

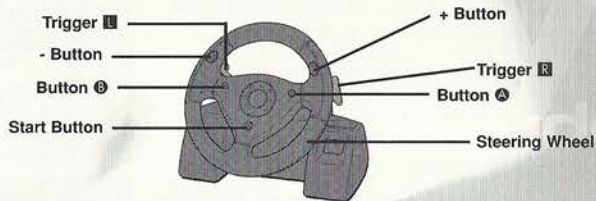
## DREAMCAST CONTROLLER



Keys	Analog Mode	Digital Mode
Analog Thumb Pad	Steer (analog)	Change the driver's view
Directional Pad (digital)	Left or Right on Directional Pad - Horn	Up or Down on Directional Pad - Change the driver's view
Button A	Hand Brake	Accelerate
Button B	Shift Up (for manual setting only)	Brake
Button X	Shift Down (will enter reverse gear if stationary)	Hand Brake
Button Y	View Behind	View Behind
Trigger L	Brake	Shift Up (for manual setting only)
Trigger R	Accelerate	Shift Down (will enter reverse gear if stationary)
Start Button	Pause / In-game Menu	Pause / In-game Menu

- If you have selected Automatic transmission, shifting up and down will occur automatically.
- Reverse gear can be selected when the car is stationary.
- If you insert a Jump Pack into Expansion socket 2, you can feel the vehicle's movements.
- For 2 player games, you will need to use an extra controller.
- Only official Dreamcast controllers should be used to play this game.

## RACE CONTROLLER



Keys	Function
Steering Wheel	Steering (analog)
Button A	Hand Brake
Button B	View Behind
+ Button	Shift Up (for manual setting only)
- Button	Shift Down (will enter reverse gear if stationary)
Trigger L	Brake
Trigger R	Accelerate
Start Button	Pause / In-game Menu

- If you have selected Automatic transmission, shifting up and down will occur automatically.
- Reverse gear can be selected when the car is stationary.
- The Jump Pack cannot be used with the Race Controller.
- For 2 player games, you will need to use an extra controller.
- Only official Dreamcast controllers should be used to play this game.



## Starting the Game

When you start the game, you'll be asked to enter your personal details, which will be used throughout the game.

Also, you'll be asked for your time zone, as MSR operates on the REAL TIME CLOCK. This means that wherever you are racing in the world, you'll be racing at the correct current time in the real cities - London, San Francisco, and Tokyo.

You will need to create a save file on your VMU, if you have one, which will then keep a record of your progress. If you do not have a VMU, you will not be able to save your progress and personal details.

- While saving or loading, please do not switch the console off or remove the VMU, controller or any other peripheral.
- Game data (including game progress, Kudos Rating, personal details, option settings, Garage, and best laps) will be saved automatically during the game.
- If you remove or insert the VMU during the game, your data may not be saved/loaded correctly.



## The Home Menu

You will find the following options on the Home Menu:

- |  |     |
|--|-----|
| <b>Your Garage</b>   | P9  |
| In your garage, you can view and select your own cars as well as view, test drive, and challenge for new cars.                   |     |
| <b>Street Racing</b>   | P11 |
| The Street Racing option is the main MSR game, where you take on a series of races and driving challenges to earn Kudos.         |     |
| <b>Time Attack</b>   | P18 |
| This is where you can practice any circuit you have unlocked in the game, record a hotlap, or compete against a ghost car.       |     |
| <b>Quick Race</b>  | P18 |
| This option allows you to create your own street races using any of the cars and circuits you have already unlocked in the game. |     |
| <b>Internet</b>  | P19 |
| Use this option to connect to the Internet to download or upload your Kudos Rating, records, and ghost car data.                 |     |
| <b>Options</b>   | P20 |
| Here you can change many options associated with the game.   |     |
| <b>Quit</b>  |     |
| Quit your current game to start a new single or multiplayer game.  |     |

kudos \ ku'dos \ , n.

1. Respect given to a skilled individual
2. Praise conferred for status achieved
3. Honor awarded to the ultimate winner

What is Kudos? Metropolis Street Racer is all about Kudos. It's Kudos that you earn from winning, from driving with style and care, and from being an impressive driver to watch. It's Kudos that you gamble each time you race, and it's Kudos that you lose if you're driving badly!

Each race, speed-trial, and challenge you race on the game's 200+ routes can earn you Kudos. The Kudos you receive is a measure of the skill and style that you drive with and of the successes that you achieve within the game.



The Kudos are added up for an overall Kudos Rating. Your Kudos Rating unlocks the 250 Stages and 25 Chapters that make up the Street Racing game. It allows you to progress, unlock new cars, and compete in the Global Kudos Challenge on the Internet.

## EARNING KUDOS

You need to earn Kudos to progress through the game. But since Kudos are about style as well as success, it's not just winning that boosts your rating. Kudos can be earned in the following ways:

### Skill

- Winning and doing well in races.
- Beating the best times set for the lap.
- Achieving the goals in a skill challenge.

### Style

- Clean, stylish laps.
- Being great fun to watch, and having fun when you drive - doing huge powerslides, massive skids, etc.
- Impressive racing skills, such as clever overtaking maneuvers.

### Gambling

- Each time you retry a race, you are gambling your Kudos on that race, as it's the last time you raced it that counts!
- You can set your own goals to beat in a variety of ways. The higher the goal you set, the more Kudos you can earn.
- Play your Jokers to gamble for even more Kudos!





## LOSING KUDOS

There's always going to be a catch – like real life, your Kudos can go down as well as up! A poor driver will lose Kudos by driving badly, dangerously, or inefficiently. Here's a summary of the ways you can LOSE Kudos:

### Bad Driving

- Crashes
- Wall-scraping

### Unfair Advantage

- Using other cars or barriers to gain position.

### Car Swaps

- Changing your car costs you a trade-in Kudos penalty – a percentage of the Kudos that you've earned with the car.

And importantly, it's the LAST time that you attempt each race in the game that will count towards your Kudos Rating – NOT your best ever attempt! Your Kudos Rating can go down, but everything that you've unlocked will always stay available in the game.



## YOUR GARAGE

In MSR, you earn cars to own in your personal Garage. There are initially three slots in your garage available for cars - you can earn extra garage slots later in the game. Selecting 'Garage' from the Home Menu at any time allows you to view information on, or drive the cars you own, view or test drive a car from the Car Showroom, or challenge for a new car.

The first thing you'll need to do to start the game is to earn a car. Select a Garage Slot to fill, and you'll be taken to the Car Showroom, where you'll find three cars initially on offer. The options for each car allow you to view an exhibition race, take a test drive with no obligation, or challenge to own the car.



To own any car, you need to beat the challenge that is set for that car, customize the car, and then the car becomes yours for use in street races. When a car is in your Garage, you can select it as the car that you drive in the races at any time, by highlighting it and choosing the 'Drive Car' option.

## YOUR GARAGE

A new car is on offer in every Chapter of the game (see 'Street Racing' section). If you are successful in all 10 Stages in a Chapter, you will unlock that Chapter's car in the Car Showroom, ready for you to view, test drive, or challenge to own. Bonus Cars are also available as a reward for Special Stages.



Each car that you unlock has a unique Car Performance Factor - or CPF - which is used to calculate the Kudos you earn with it. A car with a higher CPF will generally be more powerful, and those with a lower CPF will generally be less powerful.

If you have a full Garage of cars, and want to own a different car, you'll have to trade in one of your cars by selecting a car in a Garage slot to discard and replace with the new car. Just like real life, there is a trade-in cost, and you'll lose a percentage of the Kudos you earned with that car. The higher the car's CPF, the higher the percentage you lose. Don't forget that the 'Test Drive' option gives you a no-obligation exhibition race or test drive, so you can make sure the new car is worth trading in for!



## STREET RACING

Once you have one or more cars in your garage, you can race in the main Street Racing Kudos Challenge, which is selected via the 'Street Racing' option on the Home menu.

You begin on the 'Chapters' screen. This is where you can access which of the game's 25 Chapters you wish to try. You can find how many Kudos are needed to unlock the next Chapter by selecting the next unavailable one, which will be colored grey. Initially, only the first Chapter – 'Start Your Engines!' – is open (colored white), where there are initially three Stages unlocked and ready to race.



Each Chapter is made up of 10 Stages which are displayed as icons along the bottom of the screen. You need to successfully complete each of the Chapter's Stages to unlock the available car. You need to gain enough Kudos (as shown on screen) to unlock the next Stages and Chapters.



## STREET RACING

Stages that have been unlocked and are ready to challenge are colored white and can be selected and raced. If you highlight the next locked Stage, colored in grey, you will see how much Kudos is required to unlock it. If you have successfully completed a Stage, the icon will display a yellow check – if you fail a Stage, it will turn red.



You can attempt the unlocked Stages and Chapters in any order, or skip any that you don't want to challenge at that time, as long as you have enough Kudos to progress. And at any time in the game, and with any car, you can return to any of the Chapters and Stages that are unlocked, to try or retry them for more Kudos.

## STREET RACING – STAGE TYPES

There are a huge number of different types of challenges in MSR, which all take place on any of the 200+ circuits in the three cities. These can be roughly categorized into 7 types of stages which are listed below, along with the specific way you can gain Kudos on each Stage. Don't forget that you'll always gain Kudos for stylish and skillful driving.

### HOTLAP

In these Stages, you must aim to post a best time for the circuit, beating the minimum goal. There are a wide variety of styles of hotlaps on offer – each requiring a different approach – mixed and matched from the options below:



- Set number of laps OR single lap (very hard!)
- Fastest lap achieved OR average lap time over all the laps
- Unlimited time OR 'against the clock' time limit

You have to achieve the given goal time to complete the Stage, but you'll earn more Kudos if you choose to reduce the goal time.

**Kudos:** The more you reduce and beat the goal time by, the more Kudos you'll gain.



## STREET RACING – STAGE TYPES

### TIMED RUN

Timed runs are all raced against a timer. You will be given a goal time in which to finish either a single circuit race – or in later, more difficult chapters, a series of circuits, with the time being carried over from one to the next. Again, you can gamble to reduce the goal time to earn more Kudos. The timed runs have the added hazard of other cars driving the course – and be warned, they may not be up to your racing speed!



**Kudos:** The more you lower the goal time by, and still beat the clock, the more Kudos you'll be awarded.

### ONE ON ONE



Here you compete against one other car to win a race – it may or may not be the same type of car as yours. In this type of Stage, you can choose to give a head start to the other car at the beginning of the race, and then try to catch them. You need to beat the other car to win, so think carefully about the head start you want to give - as the more you gamble, the more Kudos you'll gain!

**Kudos:** The bigger the head start that you give, and still win the race, the bigger your Kudos score for the Stage.

## STREET RACING – STAGE TYPES

### STREET RACE

These are full-on street racing Stages where multiple cars compete in a race event. You could be racing against a variety of other cars (the average CPF will be shown), and the race will take place as a fixed number of laps on a single circuit. You can specify which minimum position you think you can achieve to earn more Kudos.



For this race type, the Kudos also depend on how well you do in the race, depending on your car. For example, 2nd place in a slow car, beating faster cars, will gain more Kudos than winning in a fast car against a group of slower ones!

To successfully complete any Street Racing Stage (either single race or the mini-championship) you don't need to win - but you **MUST** make sure that you don't come in last!

**Kudos:** The better you do in the car that you're driving relative to the opponents, the more Kudos you'll gain.

## STREET RACING – STAGE TYPES

### CHAMPIONSHIP

This Stage type is a mini-championship where you test your street racing skills over a number of circuits. You and your fellow drivers have to race a whole series of circuits, taking your finishing positions from one circuit to the next. The more you beat the others by, the higher your Kudos!



**Kudos:** The better you do in your car relative to the others, and the higher your position, the more Kudos you'll gain.

### CHALLENGE



The Challenge Stages are designed to test your skills as a driver. There are too many to list them all here – you'll learn about each Challenge at the start of the Stage. Here are just a few examples:

- Overtake challenge – try to overtake a set number of cars
- Maximum speed – set a top speed for a fast track
- Lap your opponent – try and lap your opponent within the time limit

**Kudos:** Each challenge has a number of ways to earn Kudos – just wait and see!

## STREET RACING – STAGE TYPES

### SPECIAL STAGES

In some Chapters, you may encounter a Special Stage. The Special Stage can be any of the Stages already detailed but has a restricted entry so you'll have to meet certain requirements to enter. Here are a couple of examples of the requirements needed to enter some of these Special Stages:

- Only certain cars/manufacturers may race in some Special Stages.
- Some are restricted to certain times of day, such as night races.



Special Stages have two goals rather than the normal single goal.

- The first goal is the usual Stage goal, which is successful completion of the Stage, helping you to unlock the Chapter's car.
- The second, more difficult goal will unlock one of the game's Bonus Items. And of course you'll also earn extra Kudos!

**Kudos:** You can earn normal Kudos for a Special Stage, but you also stand a chance of unlocking a Bonus Item!





### Options

The Options menu can be found on the Home Menu, and allows you to change the following options, either before you start, or during the game:

#### SETTINGS

Choose your control method, and customize the visual and text settings in the game.



#### RECORD MERGE

Merge your records with those of a friend via VMU or e-mail.

#### DEMOS/REPLAYS

View demos and replays of any Stages you have saved from the game.



#### CD/RADIO

Change the audio settings in the game. This includes volume settings and CD and radio options. When using the CD player, you can customize and create your own CD of your favorite music tracks in the game.

#### CHEATS

When you have unlocked the game's cheats, they can be activated and deactivated using this menu.

### MULTIPLAYER

MSR has a comprehensive multiplayer mode, which allows up to 8 players to log in and compete in a whole range of different competition types.



The first thing to do is to log in the players, which is done by selecting Set Up from the main Multiplayer Menu, and then adding in the details of each player. All players have the option to input their data from single-player VMU saves, which places all cars from their showroom into the multi-player showroom, and all circuits unlocked into the multi-player circuit 'pool'.

When you have set up the game to your satisfaction, you have a choice of the following options:

#### Single races

A whole variety of single race modes including head-to-head, ghost attack, first-to-split, matchplay, and pursuit.

#### Series

This is a series of head-to-head races, with a number of rounds.

#### Championship

The game will pick players in turn to compete in a team Championship.

#### Quick race

If you want a quick head-to-head race without setting up your players or options, this allows you to go straight into the action!



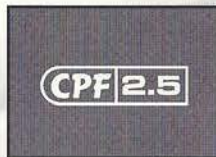


### JOKERS

In the main Street Racing game, you'll see that you can gain Jokers which appear below your Kudos rating. These can help you gain big Kudos scores! You can play each joker only once, on one Stage – but it will **DOUBLE** the Kudos you get on that Stage! But be warned, if you lose, it will **DOUBLE** the amount of negative Kudos you get too!

### CAR PERFORMANCE FACTOR (CPF)

Pay attention to the CPF of the car you are driving, and those of your opponents, as it will influence the amount of Kudos you can earn. When driving alone, you will be given a target goal based on your car's CPF. When racing with others, your Kudos depends on your CPF compared to that of your competitors. So you'll get far more Kudos for beating high CPF cars with a low CPF car than you will the other way round.



### KUDOS

Watch out for the 'K' Kudos symbol appearing on the screen when you're driving. This, along with the associated message, will tell you if you're gaining extra Kudos for good driving, or losing Kudos for being careless! Practice your driving, and learn how to make that positive 'K' symbol appear to maximize the Kudos you can earn!

### Management

**Managing Director**  
Martyn Chudley

**Business Director**  
Sarah Dixon

**Technical Director**  
Walter Lynsdale

### Programming

**Design, Structure and Frontend**  
Martyn Chudley

**Technical Coding**  
Roger Perkins

**Engine and Dynamics Coding**  
Walter Lynsdale

**Tools and Effects Coding**  
Phil Snape

**AI Coding**  
Dave Al-Daini

**Sound Coding**  
Jonathan Amor

### Artwork

**3D modeling and Textures (Tokyo)**  
Jon Dugdale, Paul Spencer

**3D modeling and Textures (San Francisco)**

Mark Sharratt, Glen Griffiths

**3D modeling and Textures (London)**  
Julie McGurran, Derek Chapman

**Car Modeling**  
Steve Heaney

**Car and City Textures**  
Lee Carter

**Frontend Artwork and City Textures**  
Gren Atherton

### Production

**Senior Producer**  
Brian Woodhouse

**Associate Producer**  
Peter Wallace

**Production Support**  
Glynn Williams

**Bizarre PR**  
Sarah Dixon

**Office Management**  
Michelle Langton

### Quality Assurance

**QA Manager**  
Ged Talbot

**QA**  
Kevin Reilly

## Product Department

**Director of Product Development**  
Naohiko Hoshino

**Executive Producer**  
Kats Sato

**Sound Producer**  
Richard Jacques

**Associate Producer**  
Jose Aller

**Test Manager**  
Jason Cumberbatch

**Lead Tester**  
Pete O'Brien

**Technical Support Manager**  
Serge Plagnol

**Hardware Engineer**  
Tamer Tahsin

**Support Engineer**  
Sandeep Bisla

**Spanish Translator**  
Roberto Párraga-Sánchez

**German Translator**  
Angelika Michitsch

**French Translator**  
Caroline Ruiz

## Marketing Support

**European Product Marketing Manager**  
Jim Pride

**European Product Marketing Executive**  
Mathew Quaeck

**UK**  
Tunde Orelaja

**Localization Producer**  
Howard Gipson

**Supervising Producer**  
Jason Kuo

**Lead Tester**  
Benjie Galvez

**Assistant Lead Testers**  
Shawn Dobbins  
Robert Reich

**Localization Manager**  
Osamu Shibamiya

## Testers

Gabrielle Brown  
Jason Jensen  
Steven Jee  
Devin Tomcik  
Jason Mercer  
Todd Slepian  
Rafael Meza  
John Saito  
Eric Ling  
Joseph Amper  
Derek Wong  
Aaron Poser

Walter Kim  
Daniel Airey  
Shaheed Khan  
JR Villatuya  
Raymond Kwan  
David Talag  
Chester Lee  
Michael Jones  
Joseph Mora

## Marketing

**Product Manager**  
Rob Alvarez

**Associate Product Manager**  
Dennis Lee

**Director Product Marketing**  
John Golden

**Public Relations**  
Heather Hawkins  
Gwen Marker

## Creative Services

Robert Schonfisch  
Angela Santos

## Special Thanks

Peter Moore  
Chris Gilbert  
Charles Bellfield  
Karen Brown  
Terri Higgins  
Molly Fitzpatrick  
Kathleen Joyce  
John Amirkhan  
Todd Slepian  
Paulita Escalona  
Sandy Castagnola





**\*THIS LIMITED WARRANTY IS VALID FOR U.S. AND CANADIAN SEGA DREAMCAST SOFTWARE MANUFACTURED FOR SALE IN AND PURCHASED AND OPERATED IN THE UNITED STATES AND CANADA, ONLY!**

## Limited Warranty

Sega of America, Inc. warrants to the original consumer purchaser that the Sega Dreamcast GD-ROM shall be free from defects in material and workmanship for a period of 90-days from the date of purchase. If a defect covered by this limited warranty occurs during this 90-day warranty period, the defective GD-ROM or component will be replaced free of charge. This limited warranty does not apply if the defects have been caused by negligence, accident, unreasonable use, modification, tampering or any other causes not related to defective materials or workmanship. Please retain the original or a photocopy of your dated sales receipt to establish the date of purchase for in-warranty replacement. For replacement, return the disc, with its original packaging and receipt, to the retailer from which the software was originally purchased. In the event that you cannot obtain a replacement from the retailer, please contact Sega to obtain support.

## Obtaining technical support/service

To receive additional support, including troubleshooting assistance, please contact Sega at

- web site [http://www.sega.com/customer\\_service](http://www.sega.com/customer_service)
- e-mail [support@sega.com](mailto:support@sega.com)
- 800 number 1-800-USA-SEGA
- Instructions en français, téléphoner au: 1-800-872-7342.

## LIMITATIONS ON WARRANTY

ANY APPLICABLE IMPLIED WARRANTIES, INCLUDING WARRANTIES OF MERCHANTABILITY AND FITNESS FOR A PARTICULAR PURPOSE, ARE HEREBY LIMITED TO 90-DAYS FROM THE DATE OF PURCHASE AND ARE SUBJECT TO THE CONDITIONS SET FORTH HEREIN. IN NO EVENT SHALL SEGA OF AMERICA, INC., BE LIABLE FOR CONSEQUENTIAL OR INCIDENTAL DAMAGES RESULTING FROM THE BREACH OF ANY EXPRESS OR IMPLIED WARRANTIES. THE PROVISIONS OF THIS LIMITED WARRANTY ARE VALID IN THE UNITED STATES ONLY. SOME STATES DO NOT ALLOW LIMITATIONS ON HOW LONG AN IMPLIED WARRANTY LASTS, OR EXCLUSION OF CONSEQUENTIAL OR INCIDENTAL DAMAGES, SO THE ABOVE LIMITATION OR EXCLUSION MAY NOT APPLY TO YOU. THIS WARRANTY PROVIDES YOU WITH SPECIFIC LEGAL RIGHTS. YOU MAY HAVE OTHER RIGHTS WHICH VARY FROM STATE TO STATE.

## ESRB RATING

This product has been rated by the Entertainment Software Rating Board. For information about the ESRB rating, or to comment about the appropriateness of the rating, please contact the ESRB at 1-800-771-3772.

Sega is registered in the U.S. Patent and Trademark Office. Sega, Dreamcast, the Dreamcast logo, and Metropolis Street Racer are either registered trademarks or trademarks of SEGA Enterprises, Ltd. All Rights Reserved. This game is licensed for use with the Sega Dreamcast system only. Copying and/or transmission of this game is strictly prohibited. Unauthorized rental or public performance of this game is a violation of applicable laws. ©SEGA ENTERPRISES, LTD., 2000. Sega of America, P.O. Box 7639, San Francisco, CA 94120. All rights reserved. Programmed in Japan. Made and printed in the USA.

Product covered under one or more of the following: U.S. Patents No's: 5,460,374; 5,627,895; 5,688,173; 4,442,486; 4,454,594; 4,462,076; Re. 35,839; Japanese Patent No. 2870538 (Patents pending in U.S. and other countries); Canadian Patent No. 1,183,276.