



# M.C. KIDS



## EmuMovies

The following are trademarks of McDonald's Corporation: M.C. Kids, Ronald, Ronald McDonald, Golden Arches, Mick, Mack, Hamburglar, Birdie the Early Bird, Grimace, Fry Kids, CosMc, The Professor, Ronald McDonald Children's Charities and McDonaldland. ©1991 McDonald's Corporation ©1991 Virgin Games, Inc. All rights reserved. Virgin is a registered trademark of Virgin Enterprises, Ltd. Virgin Games, Inc. 18061 Fitch Ave. Irvine, CA 92714 Telephone (714) 833-6710

Printed in Japan

INSTRUCTION BOOKLET



LICENSED BY NINTENDO®  
FOR PLAY ON THE

**Nintendo**  
ENTERTAINMENT  
SYSTEM®

NINTENDO AND NINTENDO  
ENTERTAINMENT SYSTEM ARE  
REGISTERED TRADEMARKS OF  
NINTENDO OF AMERICA INC.



\*This official seal is your assurance that Nintendo® has reviewed this product and that it has met our standards for excellence in workmanship, reliability and entertainment value. Always look for this seal when buying games and accessories to ensure complete compatibility with your Nintendo Entertainment System®.

## VIRGIN GAMES, INC. LIMITED WARRANTY

VIRGIN GAMES, INC. warrants to the original purchaser of this Virgin software product that the medium on which this computer program is recorded is free from defects in materials and workmanship for a period of ninety (90) days from the date of purchase. This VIRGIN software program is sold "as is" without express or implied warranty of any kind, and VIRGIN is not liable for any losses or damages of any kind resulting from use of this program. VIRGIN agrees for a period of ninety (90) days to either repair or replace, at its option, free of charge, any VIRGIN software product, postage paid, with proof of date of purchase, at its Factory Service Center.

This warranty is not applicable to normal wear and tear. This warranty shall not be applicable and shall be void if the defect in the VIRGIN software product has arisen through abuse, unreasonable use, mistreatment or neglect. THIS WARRANTY IS IN LIEU OF ALL OTHER WARRANTIES AND NO OTHER REPRESENTATIONS OR CLAIMS OF ANY NATURE SHALL BE BINDING ON OR OBLIGATE VIRGIN. ANY IMPLIED WARRANTIES OF MERCHANTABILITY AND FITNESS FOR A PARTICULAR PURPOSE, ARE LIMITED TO THE NINETY (90) DAY PERIOD DESCRIBED ABOVE. IN NO EVENT WILL VIRGIN BE LIABLE FOR ANY SPECIAL, INCIDENTAL, OR CONSEQUENTIAL DAMAGES RESULTING FROM POSSESSION, USE OR MALFUNCTION OF THIS SOFTWARE PRODUCT.

Some states do not allow limitations as to how long an implied warranty lasts and/or exclusions or limitations or incidental or consequential damages so the above limitations and/or exclusions of liability may not apply to you. This warranty gives you specific rights, and you may also have other rights which vary from state to state.

## TABLE OF CONTENTS

STORY	4
GETTING STARTED	5
OBJECTIVES	5
CONTROLLER OPERATION	7
THE MAP SCREEN	11
SPECIAL ITEMS	12
CHARACTERS	22
THE SIX LANDS	30
BONUS LEVEL	34
TIPS AND HINTS	35

## STORY

While spending the night in their tent, Mick and Mack decided to read about Ronald's adventures. One sunny day while Ronald McDonald is performing magic tricks at a picnic, the Hamburglar runs off with Ronald's Bag of Magic. The Hamburglar is hiding in the worlds of McDonaldLand. The M.C. Kids must collect the Puzzle Cards for each level to track down the Hamburglar and return the Bag of Magic to Ronald McDonald. Keeping them from their quest is a variety of unique creatures sent by the Hamburglar to keep the Bag of Magic to himself! They must hurry, before they are too late!

Mick and Mack went to sleep and were magically transformed into the M.C. Kids. Being Ronald's friends, they want to catch the Hamburglar just as much as you do!

## GETTING STARTED

Insert the M.C. KIDS (That's pronounced "EmCee" Kids) cartridge and turn on your Nintendo Entertainment System. The title screen will appear where you will choose to play ONE or TWO players. If you choose to play a one player game, you may play either Mick or Mack. Jump up and touch the Mick Mack'er to change between Mick and Mack. Walk off the left side of the screen to play a ONE player game, or walk off the screen to the right to play a TWO player game. Pressing the START button will play a ONE player game.

## OBJECTIVES

To get through each land, you must successfully solve all the levels in that land. However, before you can proceed to the next land, you must return Puzzle Cards of that land to the proper McDonaldLand character. At the beginning of each land, the McDonaldLand character of that land will tell you how many Puzzle Cards you need to continue to the next land.

Track the Hamburglar before he uses the Bag of Magic for his own use!

The story will begin and you will learn of Ronald McDonald's plight — how his Bag of Magic was stolen by Hamburglar.

You will begin the game at the first level of the first land: Ronald McDonald's Clubhouse.

To pause the game, press the START button.

To abort a level and start with a new character at any time during the game, press the START button, and then the SELECT button on the control pad.



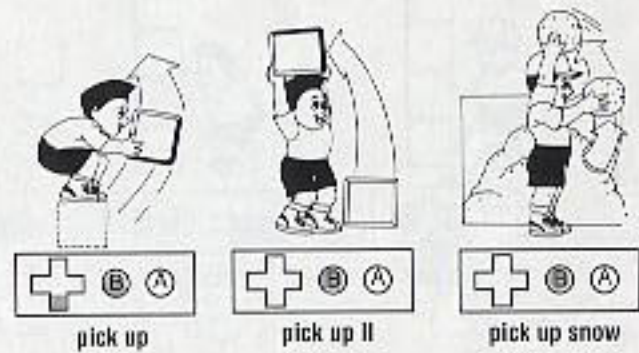
## CONTROLLER OPERATION

The controls for M.C. KIDS are quite simple but take time to master. To increase your skills, be sure and practice, practice, practice!

Pushing right and left on the control pad will move Mick and Mack right and left. This works at any time that they are moving, even if they are jumping or falling.

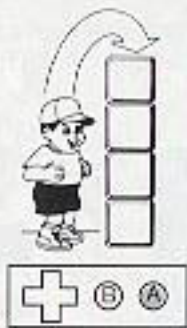
### PICKUP

You may pick up one object by standing next to it and facing it, or by standing on top of it and ducking down to pick it up pressing the B button.



## JUMP

Press the A button to jump in the direction you are facing. If you duck just before you jump, you'll jump higher. When Mick or Mack are running, you can press the A Button and jump higher and farther!



normal jump



duck jump



running jump

## THROW

To throw an object, press the B button. If you push UP on the control pad and press the B button, you will throw an object up in the air. To throw an object farther, try this while you're moving!



throw straight down



bounce throw



throw snow



throw straight up



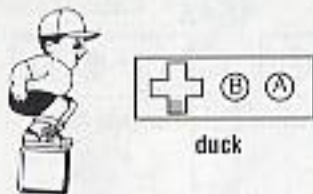
fill in block



run throw

## DUCK

To duck, press DOWN on the control pad. If a block or other object is under you when you duck and are pressing the B button, you will pick up that object. Be careful! If you're standing on a block in the air, and you pick it up, you will fall!



When you begin, you are given either four Mick or four Mack characters to complete the game. Each player starts with three hearts per character. When Mick or Mack is touched by a creature, he loses a heart. When he loses all his hearts, you must start over with another Mick or Mack character. The moment that Mick or Mack loses a heart, he will flash for a few seconds. During this time he cannot be touched — use this time wisely to get past the tricky spots! While you play the game, you will be given the chance to earn more hearts for Mick or Mack by doing super-shots. For example, if you hit two or more creatures with the same block, this qualifies as a super-shot. You will also receive a heart for hitting ten creatures. You can have up to four hearts. If you lose your last heart, you will have to start over with a new Mick or Mack character, and will have only three hearts.

## THE MAP SCREEN

On the screen are several items of interest to you. On this screen, you will see the land that the M.C. Kids are currently in, the level they are currently on, and the number of Puzzle cards necessary to go to the next land. You will also see a puzzle in the right upper corner of the screen. As you collect Puzzle cards, pieces of this puzzle will be turned over.

The path allows Mick and Mack to move between the levels within a land. When you are on top of an arch, press the A button to enter that level. You cannot move to the next level until you have crossed the ending line for the current level. Once a level is completed, the stripes on that arch disappear and you may now proceed to the next level. You may return to visit levels you have completed as often as you like, perhaps to search for a hidden puzzle card!



## SPECIAL ITEMS



### PUZZLE CARDS:

When you begin each land, you will be instructed by the McDonaldland character of that land to collect a specific number of Magic Cards for that land. Some Puzzle Cards are very well hidden and will take patience and practice to find!

As you collect Puzzle Cards for the land that you are in, you will see a part of the puzzle in the right upper corner of the screen flip over. Not all cards found in a specific land will be for that land. This means that you may need to visit other lands to find cards to complete your current land. If you cannot find some of the Puzzle cards, visit the character of the land you are in, they must have some helpful hints or clues.

If you collect all the Puzzle Cards in a set, return the cards to the character in that land to receive additional bonuses. There are 42 cards in all.



### GOLDEN ARCHES:

Collect as many of these as you can! If you collect 100, you will have a chance to play the bonus game. If successful, you will have a chance to be able to get up to five 1-UPS!



### 1-UPS:

Get as many of these as you can! Each one will give you an extra Mick or Mack character.



### ZIPPER:

To use a zipper, stand in front of the zipper and press the B button on the control pad.



### REVERSER:

Touching a reverser will send Mick and Mack spinning back to the start of the level.



### SPINNER:

At the end of some walkways in the sky, this device has a way of spinning Mick and Mack all around so that the sky is now the ground! You need to run across spinner at full speed to turn upside-down or right-side up again!



### MICK MACK'ER:

Touching this will switch your character between Mick and Mack.



### SPRINGBOARDS:

There are two types of springboards that Mick and Mack can use to jump higher! The small springboards that are raised above ground must be jumped on to be activated.



### SUPER SPRINGBOARDS:

The other type of springboard is very large. Because of this springboard's size, it will take a very heavy object to make it bounce!

### BRIDGES

#### ICE BRIDGE:

This bridge is covered in ice and is very slippery to walk across! In addition to that, you cannot carry anything across this bridge or it will break through. Beware - If you fall on it, it will also break and you will fall below.



#### FIRE BRIDGE:

This bridge appears to be perfectly fine — until you make that first step! The fire will start to burn from the left to the right, so you'd better run across as fast as you can!

### FALLING BRIDGE:

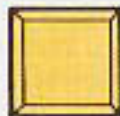
These blocks form a bridge that you must cross. As you move across, some of these blocks will fall once you have stepped on them.



### BONES:

The bones are only in certain lands that the M.C. Kids must go through. If you step quickly, you can use them more than once, but if you don't move fast, they'll crumble and fall!

### THINGS THE M.C. KIDS CAN THROW



### BLOCK:

The M.C. Kids can find these in a variety of areas, and will find them very useful.

### POROUS BLOCKS:

These blocks are necessary to get across tricky sections, such as lava. While Mick and Mack are using them, they have no control over the direction that the porous block floats!





### FILL-IN BLOCKS:

These blocks are items that Mick or Mack can find to help them use alternate routes through the levels. Look for an outline of the block in the sky and throw the block up to fill in the outline block. Once filled, you can stand on it and be transported to another area in the level.

### SAND:

In some places, there will be sand that blocks the route that Mick and Mack must use. To get by this, they must "dig" through the sand by pressing the B button on the control pad.

### SNOW:

When the M.C. Kids are by a pile of snow, they can use it to throw at the creatures! To get the snow, press the B button on the control pad.

### BOAT:

A boat is very useful for moving Mick and Mack across water. To use a boat, you can pick it up and throw the boat into the water and jump in it. While you are in a boat, you control which direction it moves in by pressing right or left on the control pad. To move out of the water, jump safely to land. Be sure to move quickly and don't let Gnash touch you!



### LIFTS

There are four types of lifts that Mick and Mack can use, they are:

#### TRAVEL LIFT:

This lift only operates when Mick or Mack are standing on it. Once they jump on, it will begin to move. The moment they jump off, it will stop.



#### CONTINUOUS LIFT:

While this lift is moving in a never-ending loop, Mick and Mack must calculate when they should jump on and off, as it will continue on its path whether they are on it or not!

### CONVEYER LIFT:

The most difficult to master, the M.C. Kids must move the opposite direction (pressing left and right on the control pad) that they wish to go! Pressing left goes "forward" and pressing right moves "backward!"



### CLOUDS:

Clouds are very useful to Mick and Mack! They will float them toward the sky where they can find bonuses and other useful items!

### ENDING LINE:

When Mick and Mack have finished a level, there will be a tight rope with a spinning Golden Arch going back and forth across it. For extra bonuses, to be used at the end of the game, when you jump over the line, land on the Golden Arch! The farther to the right you land, the bigger your bonus will be. If you jump far enough to the right AND land on the spinning arch, you'll receive a magic brick to be used in the final stage of your quest! Remember, only a true ending line has a travelling Golden Arch that spins!

When Mick and Mack finish a level for the first time or whenever they have completed a level AND found a Puzzle Card, they will high five each other!



## CHARACTERS



### MACK

Half of the dynamic team that is the M.C. Kids, Mack loves to adventure through McDonald-Land.

### MICK

The other half of this loveable pair, Mick can't wait to return Ronald's Bag of Magic!

## CREATURES MICK & MACK SHOULD AVOID



### ALBERT

This creature flitters, trying to fly, but all he ends up doing is getting in your way!



### GOFORIT

A creature that spends his time chasing you around wherever you go!



### JACK RABBIT

This is one rabbit you only WISH would disappear!



### PROPBOT

Flying around and looking around, Propbot will distract you from your goal! Watch out for the propeller!



### SPLINTER

This busy little beaver is always trying to foil your progress!



### PUTT

Don't get too close to this bird!



### MCMOOSE

When he starts charging, you'd better get out of his way!



### HANGING HARRY

Hanging from trees, Harry will catch you by surprise!



### FINEOUS

Identifiable by his tell-tale fin in the clouds, you'd better keep your eyes open for this sharp creature!



### FITCH

While it might appear to be harmless, appearances can be quite deceiving!



### FROGO

Distant relative to the Goforit, this creature is able to withstand the freezing cold! Hitting him just right is considered a Super-Shot!



### SHNO-ZER

He may not look dangerous, but the snowballs he will throw at you are real trouble!



### DEE-THAW

A close cousin to Shno-Zer, he will JUMP right for you!



### I. PSYCHO

Dwelling in the snow, you'd better not touch these!



### GNASH

He's waiting for you in the water, so be sure he doesn't have a chance to get you! You will lose your character if he touches you even once!



### GERG

Gerg follows you wherever you try to go - even into the sand!



### POKUMS

These spikes are just waiting for you to try to pass!



### NERB

Avoid the walls in the volcano where Nerb will get you!



### KROME-DOME

His protective helmet keeps him coming after you time after time! Hitting him just right is considered a Super-Shot!



### LEINAD

With his large eyes, Leinad knows every move you make!



### FIZZIE

Going by water can be hard with Fizzie around!



### WHIRLEE

Moving back and forth across the cliffs, Whirlee will keep you unsettled!



### NERRAD

Waiting for you to cross the bridge, Nerrad will come across after you!



### TYE

While they were once inside Ronald's Bag of Magic, they are now unstoppable! You will need to hit a Tye more than once!



### MAGIC WAND

With Ronald's magic, Mick and Mack will have to work overtime! The magic wand must be hit several times!



### DRAGGIE

While moving slowly, the M.C. Kids should make sure they quickly jump over this one!



## THE SIX LANDS

There are six major areas that make up McDonaldland. Each area is distinctively different, beautiful and dangerous in its own way. You must conquer them all to find Ronald's Bag of Magic!

When Mick and Mack run out of characters to play, the game will give you the option of pressing the START button to continue playing. If this option is selected, you will start the game at the last location that Mick and Mack viewed in their book. Any Puzzle Cards they found after viewing the book will be returned to their original locations and must be found again.

## RONALD'S CLUBHOUSE

This is where Mick and Mack begin their quest. There are meadows and forest lands that they must travel through if they are going to complete all the levels and find Ronald's Puzzle Cards.



## BIRDIE'S TREEHOUSE

Once Mick and Mack have completed Ronald's Clubhouse, they will be taken to Birdie's Treehouse, where they must find more Puzzle Cards for Birdie, as well as complete levels with clouds and mountains!



### GRIMACE'S HIGHLANDS

This land is full of cliff levels and lake levels. Mick and Mack must seek out Grimace in his rather large purple house and find his Puzzle Cards. Watch out for the large waterfall!



### PROFESSOR'S WORKSHOP

Within all the sand, the enchanted forest, and the ship, Mick and Mack must find the Professor's Puzzle Cards. In exchange for the Cards, the Professor will let Mick and Mack use his newest invention!



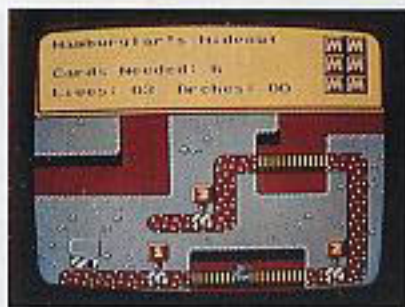
### COSMC'S RETREAT

This land is full of lunar caves and moon tunnels. In addition to a maze, Mick and Mack face a gravitational pull totally unlike what they're accustomed to.



### HAMBURGLAR'S HIDEOUT

Just when Mick and Mack thought they'd seen it all, the Hamburglar has a land full of volcanos, complete with hot lava that they must get through to find Ronald's Bag of Magic! Be sure you don't abuse the machines in the lava or they might stop working!



## THE BONUS LEVEL

When the M.C. Kids have collected 100 Golden Arches in a level, they will be taken to a special bonus level. To reach the top of the screen, you must jump on the lift with the UP arrow in it. Only one of the lifts go up! Each lift is active for only a second. Once a block has moved, be prepared to jump to another block with the UP arrow in it to continue your ascent. Once they reach the top, you'll get a chance to earn 1-UP's!



## TIPS AND HINTS

To get through tricky spots, carry a block with you. While you're jumping up, press down on the control pad and the B button on the control pad — this will enable you to get by without the risk of losing hearts!

If you throw a block up while you are moving, you will be able to eliminate the creatures before they are a threat!





## CREDITS

GAME DESIGN  
Darren Bartlett

ADDITIONAL GAME DESIGN  
Gregg Iz-Tavares

MONSTER LOGIC DATA PACKAGING  
Dan Chang

WORLD DESIGN AND LAYOUT  
Darren Bartlett

SRITES AND ANIMATION  
René Boutin  
Stan Gorman

MUSIC & SOUND  
Charles Deenen

PRODUCER  
Justin Heber

PROJECT COORDINATION  
Seth Mendelsohn

SPECIAL THANKS  
David Bishop  
Ron Miller  
(our families -n- friends)  
Izzy -n- Lizzy

MANUAL ILLUSTRATIONS  
René Boutin

## MANUAL CREDITS

WRITTEN BY  
Cathie A. Bartz

EDITED BY  
Lisa Marcinko

Special Thanks to Gregg Tavares, the M.C. Kids Development Team, Lisa Marcinko, Lyle J. Hall II, Tom Tallarico, Mike Gater, Jeff Wagoner, Judy Leon, the other numerous testers and the fine employees at Virgin Games, Inc!

## COMPLIANCE WITH FCC REGULATIONS

This equipment generates and uses radio frequency and if not installed and used properly, that is, in strict accordance with the manufacturer's instructions, may cause interference to the radio and television reception. It has been type tested and found to comply with the limits for a Class B computing device in accordance with the specifications in Subpart J of Part 15 of FCC Rules, which are designed to provide reasonable protection against such interference in a residential installation. However, there is no guarantee that interference will not occur in a particular installation. If this equipment does cause interference to radio or television reception, which can be determined by turning the equipment off and on, the user is encouraged to try to correct the interference by one or more of the following measures:

- Reorient the receiving antenna
- Relocate the NES with respect to the receiver
- Move the NES away from the receiver
- Plug the NES into a different outlet so that the Control Deck and receiver are different circuits

If necessary, the user should consult the dealer or an experienced radio/television technician for additional suggestions. The user may find the following booklet prepared by the Federal Communication Commission helpful: How to Identify and Resolve Radio-TV Interference Problems. This booklet is available from the U. S. Government Printing Office, Washington, D.C. 20402, Stock No. 004-000-00345-4.

## PRECAUTIONS

- 1.) This is a high precision game. It should not be stored in places that are very hot or cold. Never hit or drop it. Do not take it apart.
- 2.) Avoid touching the connectors, do not get them wet or dirty. Doing so may damage the game.
- 3.) Do not clean with benzene, paint thinner, alcohol or other such solvents.

Note: In the interest of product improvement, Nintendo Entertainment System specifications and design are subject to change without prior notice.

## Rear Projection Television Warning

### WARNING

#### DO NOT USE WITH FRONT OR REAR PROJECTION TV

Do not use a front or rear projection television with your Nintendo Entertainment System ("NES") or your Super Nintendo Entertainment System ("Super NES") and NES or Super NES games. Your projection television screen may be permanently damaged if video games with stationary scenes or patterns are played on your projection television. Similar damage may occur if you place a video game on hold or pause. If you use your projection television with NES or Super NES games, neither Nintendo nor any of its Nintendo's licensees will be liable for any damage. This situation is not caused by a defect in the NES, Super NES, NES games or Super NES games; other fixed or repetitive images may cause similar damage to a projection television. Please contact your TV manufacturer for further information.

## Epilepsy Warning

### WARNING

#### READ BEFORE USING YOUR NES OR SUPER NES

A very small portion of the population may experience epileptic seizures when viewing certain kinds of flashing lights or patterns that are commonly present in our daily environment. These persons may experience seizures while watching some kinds of television pictures or playing certain video games. Players who have not had any previous seizures may nonetheless have an undetected epileptic condition. Consult your physician before playing video games if you have an epileptic condition. Consult your physician if you experience any of the following symptoms while playing video games; altered vision, muscle twitching, other involuntary movements, loss of awareness of your surroundings, mental confusion, and/or convulsions.